

A22782

Leader in Biomolecular Solutions for Life Science



ABflo® 647 Rabbit anti-Human TNF-α mAb

Catalog No.: A22782

Basic Information

Observed MW

Calculated MW
26kDa

Category

SMab Recombinant Monoclonal Antibody

Applications

FC (intra)

Cross-Reactivity

Human

CloneNo number

ARC58925-ABf647

Conjugate

ABflo® 647. Ex:648nm. Em:664nm.

Background

This gene encodes a multifunctional proinflammatory cytokine that belongs to the tumor necrosis factor (TNF) superfamily. This cytokine is mainly secreted by macrophages. It can bind to, and thus functions through its receptors TNFRSF1A/TNFR1 and TNFRSF1B/TNFR. This cytokine is involved in the regulation of a wide spectrum of biological processes including cell proliferation, differentiation, apoptosis, lipid metabolism, and coagulation. This cytokine has been implicated in a variety of diseases, including autoimmune diseases, insulin resistance, psoriasis, rheumatoid arthritis ankylosing spondylitis, tuberculosis, autosomal dominant polycystic kidney disease, and cancer. Mutations in this gene affect susceptibility to cerebral malaria, septic shock, and Alzheimer disease. Knockout studies in mice also suggested the neuroprotective function of this cytokine.

Recommended Dilutions

FC (intra) 5 µl per 10⁶ cells in
100 µl volume

Immunogen Information

Gene ID
7124

Swiss Prot
P01375

Immunogen

Recombinant fusion protein containing a sequence corresponding to amino acids 77-233 of human TNF-α (NP_002344.2).

Synonyms

DIF; TNFA; TNFSF2; TNLG1F; TNF-alpha

Contact



www.abclonal.com

Product Information

Source
Rabbit

Isotype
IgG

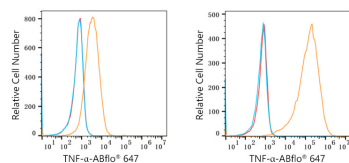
Purification
Affinity purification

Storage

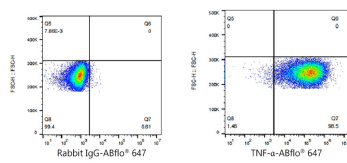
Store at 2-8°C. Avoid freeze.

Buffer: PBS with 0.03% proclin300, 0.2% BSA, pH7.3.

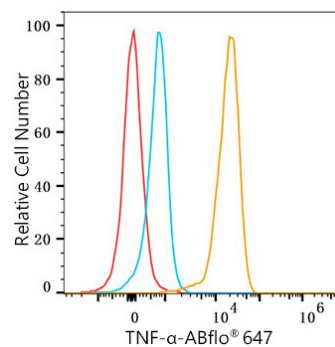
Validation Data



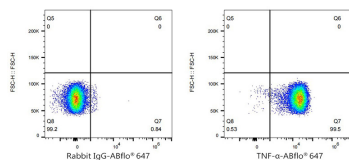
Flow cytometry: 1×10^6 293F cells (negative control, Left) and 293F (Transfection, right) cells were intracellularly-stained with ABflo® 647 Rabbit anti-Human TNF- α mAb (A22782, 5 μ l/Test, orange line) or ABflo® 647 Rabbit IgG isotype control (A22070, 5 μ l/Test, blue line). Non-fluorescently stained cells were used as blank control (red line).



Flow cytometry: 1×10^6 293F (Transfection) cells were intracellularly-stained with ABflo® 647 Rabbit IgG isotype control (A22070, 5 μ l/Test, left) or ABflo® 647 Rabbit anti-Human TNF- α mAb (A22782, 5 μ l/Test, right).



Flow cytometry: 1×10^6 Human PBMC were intracellularly-stained with ABflo® 647 Rabbit anti-Human TNF- α mAb (A22782, 5 μ l/Test, orange line) or ABflo® 647 Rabbit IgG isotype control (A22070, 5 μ l/Test, blue line). Non-fluorescently stained cells were used as blank control (red line).



Flow cytometry: 1×10^6 Human PBMC were intracellularly-stained with ABflo® 647 Rabbit IgG isotype control (A22070, 5 μ l/Test, left) or ABflo® 647 Rabbit anti-Human TNF- α mAb (A22782, 5 μ l/Test, right).