

A22781

Leader in Biomolecular Solutions for Life Science



## ABflo® 488 Rabbit anti-Human TNF-α mAb

Catalog No.: A22781

### Basic Information

#### Observed MW

**Calculated MW**  
26kDa

#### Category

SMab Recombinant Monoclonal Antibody

#### Applications

FC (intra)

#### Cross-Reactivity

Human

#### CloneNo number

ARC58925-ABf488

#### Conjugate

ABflo® 488. Ex:491nm. Em:516nm.

### Background

This gene encodes a multifunctional proinflammatory cytokine that belongs to the tumor necrosis factor (TNF) superfamily. This cytokine is mainly secreted by macrophages. It can bind to, and thus functions through its receptors TNFRSF1A/TNFR1 and TNFRSF1B/TNFR. This cytokine is involved in the regulation of a wide spectrum of biological processes including cell proliferation, differentiation, apoptosis, lipid metabolism, and coagulation. This cytokine has been implicated in a variety of diseases, including autoimmune diseases, insulin resistance, psoriasis, rheumatoid arthritis ankylosing spondylitis, tuberculosis, autosomal dominant polycystic kidney disease, and cancer. Mutations in this gene affect susceptibility to cerebral malaria, septic shock, and Alzheimer disease. Knockout studies in mice also suggested the neuroprotective function of this cytokine.

### Recommended Dilutions

**FC (intra)**      5 µl per 10<sup>6</sup> cells in  
100 µl volume

### Immunogen Information

**Gene ID**  
7124

**Swiss Prot**  
P01375

#### Immunogen

Recombinant fusion protein containing a sequence corresponding to amino acids 77-233 of human TNF-α (NP\_002344.2).

#### Synonyms

DIF; TNFA; TNFSF2; TNLG1F; TNF-alpha

### Contact



[www.abclonal.com](http://www.abclonal.com)

### Product Information

**Source**  
Rabbit

**Isotype**  
IgG

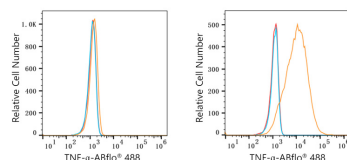
**Purification**  
Affinity purification

#### Storage

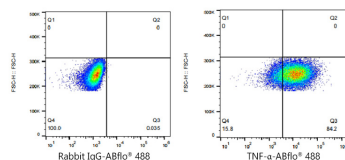
Store at 2-8°C. Avoid freeze.

Buffer: PBS with 0.03% proclin300, 0.2% BSA, pH7.3.

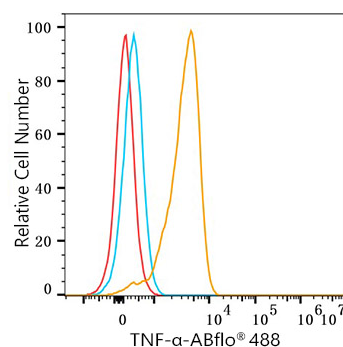
## Validation Data



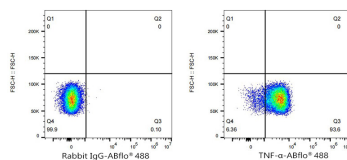
Flow cytometry:  $1 \times 10^6$  293F cells (negative control, Left) and 293F (Transfection, right) cells were intracellularly-stained with ABflo® 488 Rabbit anti-Human TNF- $\alpha$  mAb (A22781, 5  $\mu$ l/Test, orange line) or ABflo® 488 Rabbit IgG isotype control (A22069, 5  $\mu$ l/Test, blue line). Non-fluorescently stained cells were used as blank control (red line).



Flow cytometry:  $1 \times 10^6$  293F (Transfection) cells were intracellularly-stained with ABflo® 488 Rabbit IgG isotype control (A22069, 5  $\mu$ l/Test, left) or ABflo® 488 Rabbit anti-Human TNF- $\alpha$  mAb (A22781, 5  $\mu$ l/Test, right).



Flow cytometry:  $1 \times 10^6$  Human PBMC were intracellularly-stained with ABflo® 488 Rabbit anti-Human TNF- $\alpha$  mAb (A22781, 5  $\mu$ l/Test, orange line) or ABflo® 488 Rabbit IgG isotype control (A22069, 5  $\mu$ l/Test, blue line). Non-fluorescently stained cells were used as blank control (red line).



Flow cytometry:  $1 \times 10^6$  Human PBMC were intracellularly-stained with ABflo® 488 Rabbit IgG isotype control (A22069, 5  $\mu$ l/Test, left) or ABflo® 488 Rabbit anti-Human TNF- $\alpha$  mAb (A22781, 5  $\mu$ l/Test, right).