

A2270

Leader in Biomolecular Solutions for Life Science



## N-WASP/WASL Rabbit mAb

Catalog No.: A2270

Recombinant

1 Publications

### Basic Information

#### Observed MW

70kDa

#### Calculated MW

55kDa

#### Category

SMab Recombinant Monoclonal Antibody

#### Applications

WB, IHC-P, ELISA

#### Cross-Reactivity

Human, Mouse, Rat

#### CloneNo number

ARC0737

### Background

This gene encodes a member of the Wiskott-Aldrich syndrome (WAS) protein family. Wiskott-Aldrich syndrome proteins share similar domain structure, and associate with a variety of signaling molecules to alter the actin cytoskeleton. The encoded protein is highly expressed in neural tissues, and interacts with several proteins involved in cytoskeletal organization, including cell division control protein 42 (CDC42) and the actin-related protein-2/3 (ARP2/3) complex. The encoded protein may be involved in the formation of long actin microspikes, and in neurite extension.

### Recommended Dilutions

WB	1:500 - 1:1000
IHC-P	1:50 - 1:200

### Immunogen Information

#### Gene ID

8976

#### Swiss Prot

O00401

#### Immunogen

A synthetic peptide corresponding to a sequence within amino acids 350-450 of human N-WASP/WASL (O00401).

#### Synonyms

NWASP; WASPB; N-WASP; N-WASP/WASL

### Contact



[www.abclonal.com](http://www.abclonal.com)

### Product Information

#### Source

Rabbit

#### Isotype

IgG

#### Purification

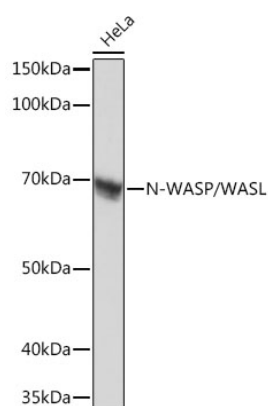
Affinity purification

#### Storage

Store at -20°C. Avoid freeze / thaw cycles.

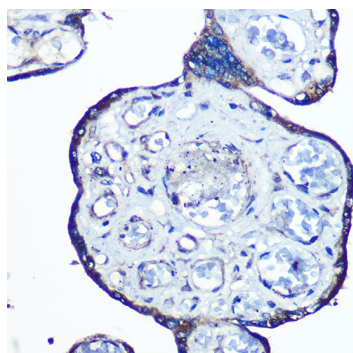
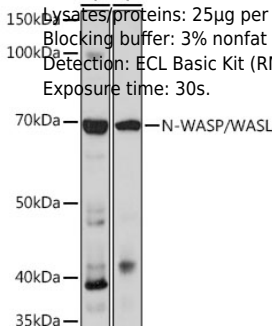
Buffer: PBS with 0.02% sodium azide, 0.05% BSA, 50% glycerol, pH7.3.

## Validation Data

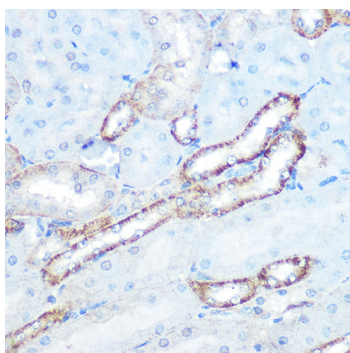


Western blot analysis of extracts of HeLa cells, using N-WASP/N-WASP/WASL Rabbit mAb (A2270) at 1:1000 dilution.  
 Secondary antibody: HRP Goat Anti-Rabbit IgG (H+L) (AS014) at 1:10000 dilution.  
 Lysates/proteins: 25µg per lane.  
 Blocking buffer: 3% nonfat dry milk in TBST.  
 Detection: ECL Basic Kit (RM00020).  
 Exposure time: 1s.

Western blot analysis of extracts of various cell lines, using N-WASP/N-WASP/WASL Rabbit mAb (A2270) at 1:1000 dilution.  
 Secondary antibody: HRP Goat Anti-Rabbit IgG (H+L) (AS014) at 1:10000 dilution.  
 Lysates/proteins: 25µg per lane.  
 Blocking buffer: 3% nonfat dry milk in TBST.  
 Detection: ECL Basic Kit (RM00020).  
 Exposure time: 30s.



Immunohistochemistry analysis of paraffin-embedded human placenta using N-WASP/N-WASP/WASL Rabbit mAb (A2270) at dilution of 1:100 (40x lens). Perform microwave antigen retrieval with 10 mM PBS buffer pH 7.2 before commencing with IHC staining protocol.



Immunohistochemistry analysis of paraffin-embedded mouse kidney using N-WASP/N-WASP/WASL Rabbit mAb (A2270) at dilution of 1:100 (40x lens). Perform microwave antigen retrieval with 10 mM PBS buffer pH 7.2 before commencing with IHC staining protocol.