

A22629

Leader in Biomolecular Solutions for Life Science



Cytochrome P450 2E1 (CYP2E1) Rabbit mAb

Catalog No.: A22629

Recombinant

1 Publications

Basic Information

Observed MW

Calculated MW

57kDa

Category

SMab Recombinant Monoclonal Antibody

Applications

WB,IHC-P,ELISA

Cross-Reactivity

Human,Mouse,Rat

CloneNo number

ARC58003

Background

This gene encodes a member of the cytochrome P450 superfamily of enzymes. The cytochrome P450 proteins are monooxygenases which catalyze many reactions involved in drug metabolism and synthesis of cholesterol, steroids and other lipids. This protein localizes to the endoplasmic reticulum and is induced by ethanol, the diabetic state, and starvation. The enzyme metabolizes both endogenous substrates, such as ethanol, acetone, and acetal, as well as exogenous substrates including benzene, carbon tetrachloride, ethylene glycol, and nitrosamines which are premutagens found in cigarette smoke. Due to its many substrates, this enzyme may be involved in such varied processes as gluconeogenesis, hepatic cirrhosis, diabetes, and cancer.

Recommended Dilutions

| | |
|-------|------------------|
| WB | 1:2000 - 1:10000 |
| IHC-P | 1:500 - 1:1000 |

Immunogen Information

Gene ID

1571

Swiss Prot

P05181

Immunogen

Recombinant fusion protein containing a sequence corresponding to amino acids 234-493 of human CYP2E1 (NP_000764.1)

Synonyms

CPE1; CYP2E; P450-J; P450C2E; Cytochrome P450 2E1 (CYP2E1)

Contact



www.abclonal.com

Product Information

Source

Rabbit

Isotype

IgG

Purification

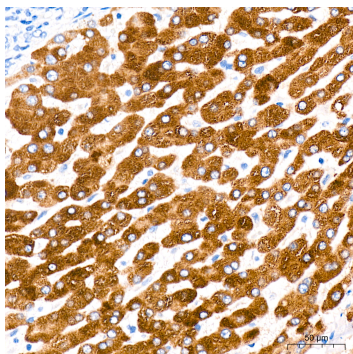
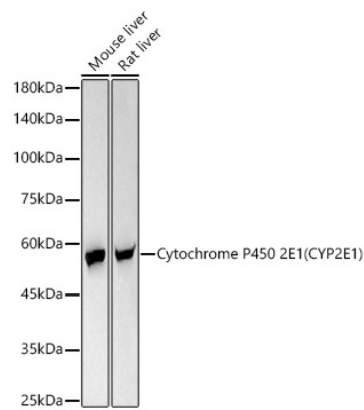
Affinity purification

Storage

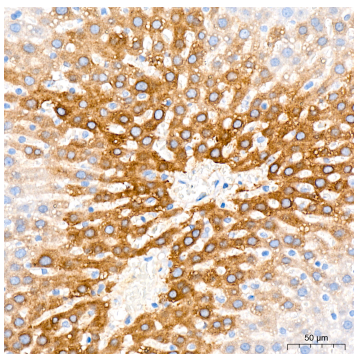
Store at -20°C. Avoid freeze / thaw cycles.

Buffer: PBS with 0.05% proclin300,0.05% BSA,50% glycerol,pH7.3.

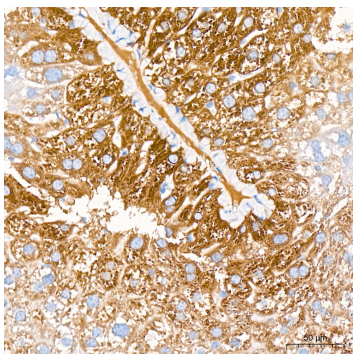
Validation Data



Immunohistochemistry analysis of Cytochrome P450 2E1 (CYP2E1) in paraffin-embedded human liver tissue using Cytochrome P450 2E1 (CYP2E1) Rabbit mAb (A22629) at a dilution of 1:800 (40x lens). High pressure antigen retrieval was performed with 0.01 M citrate buffer (pH 6.0) prior to IHC staining.



Immunohistochemistry analysis of Cytochrome P450 2E1 (CYP2E1) in paraffin-embedded rat liver tissue using Cytochrome P450 2E1 (CYP2E1) Rabbit mAb (A22629) at a dilution of 1:800 (40x lens). High pressure antigen retrieval was performed with 0.01 M citrate buffer (pH 6.0) prior to IHC staining.



Immunohistochemistry analysis of Cytochrome P450 2E1 (CYP2E1) in paraffin-embedded mouse liver tissue using Cytochrome P450 2E1 (CYP2E1) Rabbit mAb (A22629) at a dilution of 1:800 (40x lens). High pressure antigen retrieval was performed with 0.01 M citrate buffer (pH 6.0) prior to IHC staining.