

A22615

Leader in Biomolecular Solutions for Life Science



## CYP24A1 Rabbit mAb

Catalog No.: A22615

Recombinant

### Basic Information

#### Observed MW

Refer to figures

#### Calculated MW

59kDa

#### Category

SMab Recombinant Monoclonal Antibody

#### Applications

IHC-P,IF/ICC,ELISA

#### Cross-Reactivity

Human

#### CloneNo number

ARC58733

### Background

This gene encodes a member of the cytochrome P450 superfamily of enzymes. The cytochrome P450 proteins are monooxygenases which catalyze many reactions involved in drug metabolism and synthesis of cholesterol, steroids and other lipids. This mitochondrial protein initiates the degradation of 1,25-dihydroxyvitamin D3, the physiologically active form of vitamin D3, by hydroxylation of the side chain. In regulating the level of vitamin D3, this enzyme plays a role in calcium homeostasis and the vitamin D endocrine system. Alternatively spliced transcript variants encoding different isoforms have been found for this gene.

### Recommended Dilutions

IHC-P	1:100 - 1:500
IF/ICC	1:50 - 1:200

### Immunogen Information

Gene ID	Swiss Prot
1591	Q07973

#### Immunogen

Recombinant protein of human CYP24A1.

#### Synonyms

CP24; HCAI; CYP24; HCINF1; P450-CC24; CYP24A1

### Contact



[www.abclonal.com](http://www.abclonal.com)

### Product Information

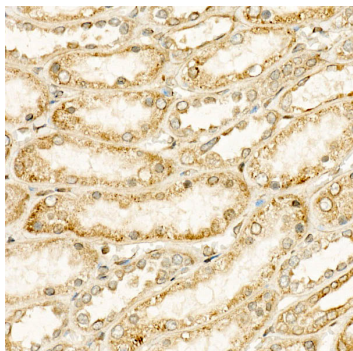
Source	Isotype	Purification
Rabbit	IgG	Affinity purification

#### Storage

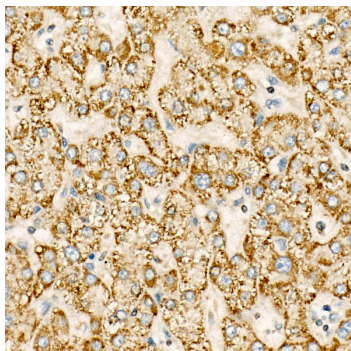
Store at -20°C. Avoid freeze / thaw cycles.

Buffer: PBS with 0.05% proclin300,0.05% BSA,50% glycerol,pH7.3.

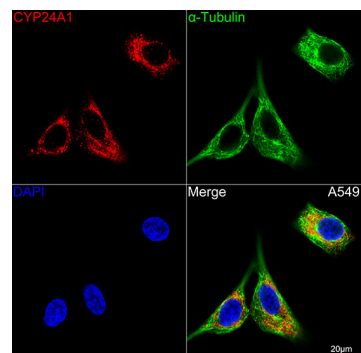
## Validation Data



Immunohistochemistry analysis of paraffin-embedded human kidney using CYP24A1 Rabbit mAb (A22615) at dilution of 1:400 (40x lens). Perform high pressure antigen retrieval with 10 mM citrate buffer pH 6.0 before commencing with IHC staining protocol.



Immunohistochemistry analysis of paraffin-embedded human liver using CYP24A1 Rabbit mAb (A22615) at dilution of 1:400 (40x lens). Perform high pressure antigen retrieval with 10 mM citrate buffer pH 6.0 before commencing with IHC staining protocol.



Confocal imaging of A549 cells using CYP24A1 Rabbit mAb (A22615, dilution 1:200) (Red). The cells were counterstained with  $\alpha$ -Tubulin Mouse mAb (AC012, dilution 1:400) (Green). DAPI was used for nuclear staining (blue). Objective: 100x.