

A22591

Leader in Biomolecular Solutions for Life Science



ABflo® 647 Rabbit anti-Human CD171/L1CAM mAb

Catalog No.: A22591

Basic Information

Observed MW

Calculated MW
140kDa

Category

SMab Recombinant Monoclonal Antibody

Applications

FC

Cross-Reactivity

Human

CloneNo number

ARC57415-ABf647

Conjugate

ABflo® 647. Ex:648nm. Em:664nm.

Background

The protein encoded by this gene is an axonal glycoprotein belonging to the immunoglobulin supergene family. The ectodomain, consisting of several immunoglobulin-like domains and fibronectin-like repeats (type III), is linked via a single transmembrane sequence to a conserved cytoplasmic domain. This cell adhesion molecule plays an important role in nervous system development, including neuronal migration and differentiation. Mutations in the gene cause X-linked neurological syndromes known as CRASH (corpus callosum hypoplasia, retardation, aphasia, spastic paraplegia and hydrocephalus). Alternative splicing of this gene results in multiple transcript variants, some of which include an alternate exon that is considered to be specific to neurons.

Recommended Dilutions

FC 5 µl per 10⁶ cells in
100 µl volume

Immunogen Information

Gene ID
3897

Swiss Prot
P32004

Immunogen

Recombinant fusion protein containing a sequence corresponding to amino acids 20-1120 of human CD171/L1CAM (NP_000416.1).

Synonyms

S10; HSAS; HYCX; MASA; MIC5; SPG1; CAML1; CD171; HSAS1; N-CAML1; NCAM-L1; N-CAM-L1

Contact



www.abclonal.com

Product Information

Source
Rabbit

Isotype
IgG

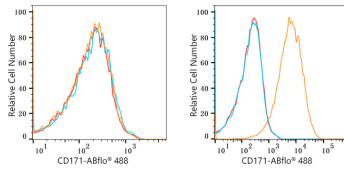
Purification
Affinity purification

Storage

Store at 2-8°C. Avoid freeze.

Buffer: PBS with 0.03% proclin300, 0.2% BSA, pH7.3.

Validation Data



Flow cytometry: 1×10^6 Jurkat cells (negative control, Left) and MCF7 cells (Right) were surface-stained with ABflo® 647 Rabbit anti-Human CD171/L1CAM mAb (A22591, 5 μ l/Test, orange line) or ABflo® 647 Rabbit IgG isotype control (A22070, 5 μ l/Test, blue line). Non-fluorescently stained cells were used as blank control (red line).