

A22581

Leader in Biomolecular Solutions for Life Science



ABflo® 647 Rabbit anti-Human CD150/SLAM mAb

Catalog No.: A22581

Basic Information

Observed MW

Refer to figures

Calculated MW

37kDa

Category

SMab Recombinant Monoclonal Antibody

Applications

FC

Cross-Reactivity

Human

CloneNo number

ARC56095-ABf647

Conjugate

ABflo® 647. Ex:648nm. Em:664nm.

Background

Enables SH2 domain binding activity and identical protein binding activity. Involved in several processes, including negative regulation of CD40 signaling pathway; negative regulation of cytokine production; and positive regulation of MAPK cascade. Located in extracellular exosome.

Recommended Dilutions

FC 5 µl per 10⁶ cells in
100 µl volume

Immunogen Information

Gene ID

6504

Swiss Prot

Q13291

Immunogen

Recombinant fusion protein containing a sequence corresponding to amino acids 21-237 of human CD150 (NP_003028.1).

Synonyms

SLAM; CD150; CDw150

Contact



www.abclonal.com

Product Information

Source

Rabbit

Isotype

IgG

Purification

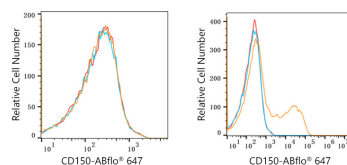
Affinity purification

Storage

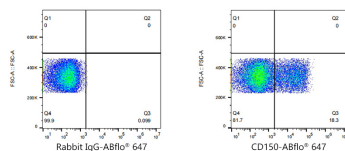
Store at 2-8°C. Avoid freeze.

Buffer: PBS with 0.03% proclin300,0.2% BSA,pH7.3.

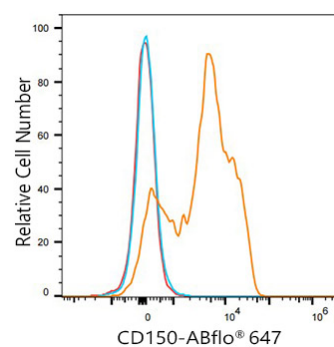
Validation Data



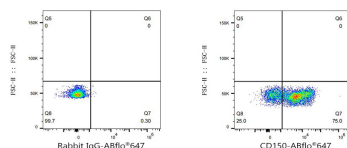
Flow cytometry: 1×10^6 293F cells (negative control, left) and 293F(Transfection, right) cells were surface-stained with ABflo® 647 Rabbit anti-Human CD150/SLAM mAb(A22581, 5 μ l/Test, orange line) or ABflo® 647 Rabbit IgG isotype control (A22070, 5 μ l/Test, blue line). Non-fluorescently stained cells were used as blank control (red line).



Flow cytometry: 1×10^6 293F(Transfection) cells were surface-stained with ABflo® 647 Rabbit IgG isotype control (A22070, 5 μ l/Test, left) or ABflo® 647 Rabbit anti-Human CD150/SLAM mAb(A22581, 5 μ l/Test, right).



Flow cytometry: 1×10^6 Human PBMC were surface-stained with ABflo® 647 Rabbit anti-Human CD150/SLAM mAb(A22581, 5 μ l/Test, orange line) or ABflo® 647 Rabbit IgG isotype control (A22070, 5 μ l/Test, blue line). Non-fluorescently stained cells were used as blank control (red line).



Flow cytometry: 1×10^6 Human PBMC were surface-stained with ABflo® 647 Rabbit IgG isotype control (A22070, 5 μ l/Test, left) or ABflo® 647 Rabbit anti-Human CD150/SLAM mAb(A22581, 5 μ l/Test, right).