

A22575

Leader in Biomolecular Solutions for Life Science



## ABflo® 488 Rabbit anti-Dog CD27 mAb

Catalog No.: A22575

### Basic Information

#### Observed MW

**Calculated MW**  
31kDa

#### Category

SMab Recombinant Monoclonal Antibody

#### Applications

FC

#### Cross-Reactivity

Dog

#### CloneNo number

ARC55676-ABf488

#### Conjugate

ABflo® 488. Ex:491nm. Em:516nm.

### Background

The protein encoded by this gene is a member of the TNF-receptor superfamily. This receptor is required for generation and long-term maintenance of T cell immunity. It binds to ligand CD70, and plays a key role in regulating B-cell activation and immunoglobulin synthesis. This receptor transduces signals that lead to the activation of NF-kappaB and MAPK8/JNK. Adaptor proteins TRAF2 and TRAF5 have been shown to mediate the signaling process of this receptor. CD27-binding protein (SIVA), a proapoptotic protein, can bind to this receptor and is thought to play an important role in the apoptosis induced by this receptor.

### Recommended Dilutions

**FC**                      5 µl per 10<sup>6</sup> cells in  
                                 100 µl volume

### Immunogen Information

**Gene ID**  
611674

**Swiss Prot**

#### Immunogen

Recombinant fusion protein containing a sequence corresponding to amino acids 20-215 of dog CD27 (XP\_038295140.1).

#### Synonyms

T14; S152; Tp55; TNFRSF7; S152. LPFS2

### Contact



[www.abclonal.com](http://www.abclonal.com)

### Product Information

**Source**  
Rabbit

**Isotype**  
IgG

**Purification**  
Affinity purification

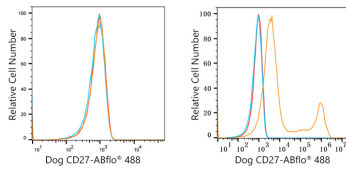
#### Storage

Store at 2-8°C. Avoid freeze.

Buffer: PBS with 0.03% proclin300,0.2% BSA,pH7.3.

## Validation Data

---



Flow cytometry:  $1 \times 10^6$  293F cells (negative control, left) and 293F (Transfection, right) cells were surface-stained with ABflo® 488 Rabbit anti-Dog CD27 mAb (A22575, 5  $\mu$ l/Test, orange line) or ABflo® 488 Rabbit IgG isotype control (A22069, 5  $\mu$ l/Test, blue line). Non-fluorescently stained cells were used as blank control (red line).