

A22568

Leader in Biomolecular Solutions for Life Science



## NEDD8 Rabbit mAb

Catalog No.: A22568

Recombinant

### Basic Information

#### Observed MW

9kDa

#### Calculated MW

9kDa

#### Category

SMab Recombinant Monoclonal Antibody

#### Applications

WB, ELISA

#### Cross-Reactivity

Human, Mouse, Rat

#### CloneNo number

ARC58460

### Background

Enables ubiquitin protein ligase binding activity. Acts upstream of or within protein neddylation. Located in cytosol and nucleoplasm. Biomarker of Parkinson's disease and malignant astrocytoma.

### Recommended Dilutions

WB 1:2000 - 1:20000

### Immunogen Information

#### Gene ID

4738

#### Swiss Prot

Q15843

#### Immunogen

Recombinant fusion protein containing a sequence corresponding to amino acids 1-81 of human NEDD8 (NP\_006147.1).

#### Synonyms

NEDD-8; NEDD8

### Contact



[www.abclonal.com](http://www.abclonal.com)

### Product Information

#### Source

Rabbit

#### Isotype

IgG

#### Purification

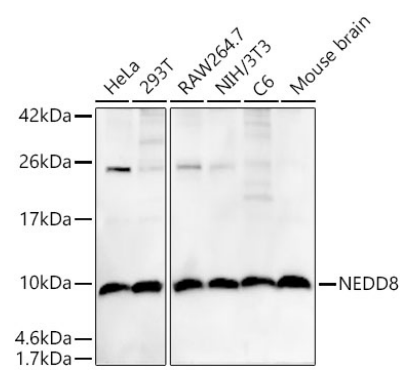
Affinity purification

#### Storage

Store at -20°C. Avoid freeze / thaw cycles.

Buffer: PBS with 0.05% proclin300, 0.05% BSA, 50% glycerol, pH7.3.

Validation Data



Western blot analysis of various lysates, using NEDD8 antibody (A22568) at 1:20000 dilution.  
Secondary antibody: HRP Goat Anti-Rabbit IgG (H+L) (AS014) at 1:10000 dilution.  
Lysates/proteins: 25µg per lane.  
Blocking buffer: 3% nonfat dry milk in TBST.  
Detection: ECL Enhanced Kit (RM00021).  
Exposure time: 150s.