

A22525

Leader in Biomolecular Solutions for Life Science



## [KO Validated] MCU Rabbit mAb

Catalog No.: A22525 **KO** **Validated** **Recombinant**

### Basic Information

#### Observed MW

Refer to figures

#### Calculated MW

40kDa

#### Category

SMab Recombinant Monoclonal Antibody

#### Applications

WB, ELISA

#### Cross-Reactivity

Human, Mouse, Rat

#### CloneNo number

ARC57879

### Background

Enables calcium channel activity; identical protein binding activity; and uniporter activity. Involved in several processes, including positive regulation of mitochondrial calcium ion concentration; positive regulation of mitochondrial fission; and positive regulation of neutrophil chemotaxis. Acts upstream of or within calcium import into the mitochondrion. Located in mitochondrial inner membrane. Is integral component of mitochondrial inner membrane. Part of uniplex complex.

### Recommended Dilutions

WB 1:2000 - 1:20000

### Immunogen Information

#### Gene ID

90550

#### Swiss Prot

Q8NE86

#### Immunogen

Recombinant fusion protein containing a sequence corresponding to amino acids 51-170 of human MCU (NP\_612366.1).

#### Synonyms

HsMCU; C10orf42; CCDC109A; CU

### Contact



[www.abclonal.com](http://www.abclonal.com)

### Product Information

#### Source

Rabbit

#### Isotype

IgG

#### Purification

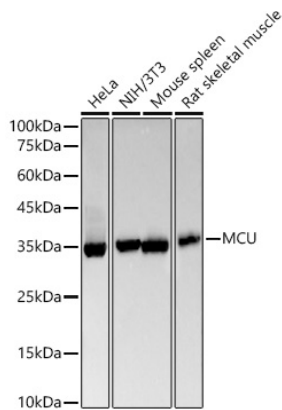
Affinity purification

#### Storage

Store at -20°C. Avoid freeze / thaw cycles.

Buffer: PBS with 0.05% proclin300, 0.05% BSA, 50% glycerol, pH7.3.

## Validation Data



Western blot analysis of various lysates, using MCU antibody (A22525) at 1:20000 dilution.  
Secondary antibody: HRP Goat Anti-Rabbit IgG (H+L) (AS014) at 1:10000 dilution.  
Lysates/proteins: 25µg per lane.  
Blocking buffer: 3% nonfat dry milk in TBST.  
Detection: ECL Basic Kit (RM00020).  
Exposure time: 90s.

Western blot analysis of extracts from wild type (WT) and MCU knockout (KO) 293T(KO) cells, using MCU antibody (A22525) at 1:20000 dilution.

Secondary antibody: HRP Goat Anti-Rabbit IgG (H+L) (AS014) at 1:10000 dilution.  
Lysates/proteins: 25µg per lane.  
Blocking buffer: 3% nonfat dry milk in TBST.  
Detection: ECL Basic Kit (RM00020).  
Exposure time: 90s.

