

# ABflo® 488 Rabbit anti-Human CD317/BST2 mAb

Catalog No.: A22517

## Basic Information

### Observed MW

Refer to figures

### Calculated MW

18kDa/19kDa

### Category

Primary antibody

### Applications

FC

### Cross-Reactivity

Human

### CloneNo number

ARC56691-ABf488

## Background

Bone marrow stromal cells are involved in the growth and development of B-cells. The specific function of the protein encoded by the bone marrow stromal cell antigen 2 is undetermined; however, this protein may play a role in pre-B-cell growth and in rheumatoid arthritis.

## Recommended Dilutions

**FC** 5 µl per 10<sup>6</sup> cells in 100  
µl volume

## Immunogen Information

### Gene ID

684

### Swiss Prot

Q10589

### Immunogen

Recombinant fusion protein containing a sequence corresponding to amino acids 49-160 of human CD317/BST2 (NP\_004326.1).

### Synonyms

CD317; HM1.24; TETHERIN

## Contact

 | [www.abclonal.com](http://www.abclonal.com)

## Product Information

### Source

Rabbit

### Isotype

IgG

### Purification

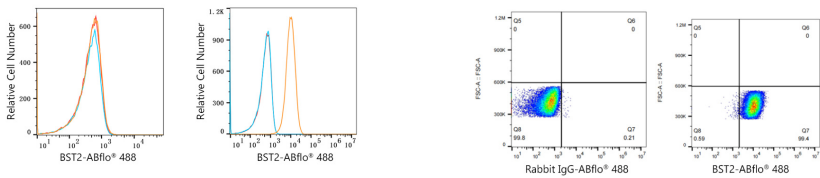
Affinity purification

### Storage

Store at 2-8°C. Avoid freeze.

Buffer: PBS with 0.03% proclin300,0.2% BSA,pH7.3.

# Validation Data



Flow cytometry: 1X10<sup>6</sup> A549 cells (negative control, left) and HeLa cells (right) were surface-stained with ABflo® 488 Rabbit anti-Human CD317/BST2 mAb (A22517, 5 µl/Test, orange line) or ABflo® 488 Rabbit IgG isotype control (A22069, 5 µl/Test, blue line). Non-fluorescently stained cells were used as blank control (red line).

Flow cytometry: 1X10<sup>6</sup> HeLa cells were surface-stained with ABflo® 488 Rabbit IgG isotype control (A22069, 5 µl/Test, left) or ABflo® 488 Rabbit anti-Human BST2 mAb (A22517, 5 µl/Test, right).