

A22507

Leader in Biomolecular Solutions for Life Science



ABflo® 647 Rabbit anti-Human ErbB3/HER3 mAb

Catalog No.: A22507

Basic Information

Observed MW

Refer to figures

Calculated MW

148kDa

Category

SMab Recombinant Monoclonal Antibody

Applications

FC

Cross-Reactivity

Human

CloneNo number

ARC55149-ABf647

Conjugate

ABflo® 647. Ex:648nm. Em:664nm.

Background

This gene encodes a member of the epidermal growth factor receptor (EGFR) family of receptor tyrosine kinases. This membrane-bound protein has a neuregulin binding domain but not an active kinase domain. It therefore can bind this ligand but not convey the signal into the cell through protein phosphorylation. However, it does form heterodimers with other EGF receptor family members which do have kinase activity. Heterodimerization leads to the activation of pathways which lead to cell proliferation or differentiation. Amplification of this gene and/or overexpression of its protein have been reported in numerous cancers, including prostate, bladder, and breast tumors. Alternate transcriptional splice variants encoding different isoforms have been characterized. One isoform lacks the intermembrane region and is secreted outside the cell. This form acts to modulate the activity of the membrane-bound form. Additional splice variants have also been reported, but they have not been thoroughly characterized.

Recommended Dilutions

FC 5 µl per 10⁶ cells in
100 µl volume

Immunogen Information

Gene ID

2065

Swiss Prot

P21860

Immunogen

Recombinant fusion protein containing a sequence corresponding to amino acids 20-643 of human ErbB3/HER3 (NP_001973.2).

Synonyms

HER3; FERLK; LCCS2; VSCN1; ErbB-3; c-erbB3; erbB3-S; MDA-BF-1; c-erbB-3; p180-ErbB3; p45-sErbB3; p85-sErbB3

Contact



www.abclonal.com

Product Information

Source

Rabbit

Isotype

IgG

Purification

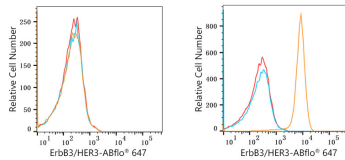
Affinity purification

Storage

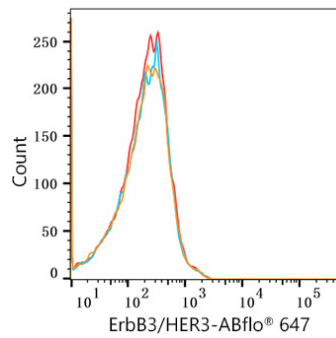
Store at 2-8°C. Avoid freeze.

Buffer: PBS with 0.03% proclin300, 0.2% BSA, pH7.3.

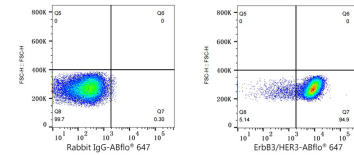
Validation Data



Flow cytometry: 1×10^6 HEL cells (negative control, left) and MCF7 cells (right) were surface-stained with ABflo® 647 Rabbit anti-Human ErbB3/HER3 mAb (A22507, 5 μ l/Test, orange line) or ABflo® 647 Rabbit IgG isotype control (A22070, 5 μ l/Test, blue line). Non-fluorescently stained cells were used as blank control (red line).



Flow cytometry: 1×10^6 HEL cells (negative control) were surface-stained with ABflo® 647 Rabbit anti-Human ErbB3/HER3 mAb (A22507, 5 μ l/Test, orange line) or ABflo® 647 Rabbit IgG isotype control (A22070, 5 μ l/Test, blue line). Non-fluorescently stained HEL cells were used as blank control (red line).



Flow cytometry: 1×10^6 MCF7 cells were surface-stained with ABflo® 647 Rabbit IgG isotype control (A22070, 5 μ l/Test, left) or ABflo® 647 Rabbit anti-Human ErbB3/HER3 mAb (A22507, 5 μ l/Test, right).