

# ABflo® 488 Rabbit anti-Human AXL mAb

Catalog No.: A22502

## Basic Information

### Observed MW

### Calculated MW

98kDa

### Category

Primary antibody

### Applications

FC

### Cross-Reactivity

Human

### CloneNo number

ARC53013-ABf488

## Background

The protein encoded by this gene is a member of the Tyro3-Axl-Mer (TAM) receptor tyrosine kinase subfamily. The encoded protein possesses an extracellular domain which is composed of two immunoglobulin-like motifs at the N-terminal, followed by two fibronectin type-III motifs. It transduces signals from the extracellular matrix into the cytoplasm by binding to the vitamin K-dependent protein growth arrest-specific 6 (Gas6). This gene may be involved in several cellular functions including growth, migration, aggregation and anti-inflammation in multiple cell types. The encoded protein acts as a host cell receptor for multiple viruses, including Marburg, Ebola and Lassa viruses and is a candidate receptor for the SARS-CoV2 virus.

## Recommended Dilutions

**FC** 5 µl per 10<sup>6</sup> cells in 100 µl volume

## Immunogen Information

### Gene ID

558

### Swiss Prot

P30530

### Immunogen

Recombinant fusion protein containing a sequence corresponding to amino acids 33-449 of human AXL (NP\_068713.2).

### Synonyms

ARK; UFO; JTK11; Tyro7

## Contact

 | [www.abclonal.com](http://www.abclonal.com)

## Product Information

### Source

Rabbit

### Isotype

IgG

### Purification

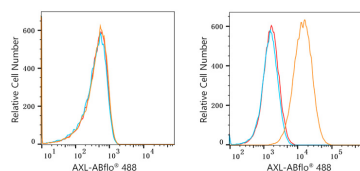
Affinity purification

### Storage

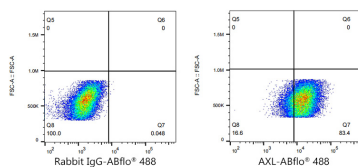
Store at 2-8°C. Avoid freeze.

Buffer: PBS with 0.03% proclin300, 0.2% BSA, pH7.3.

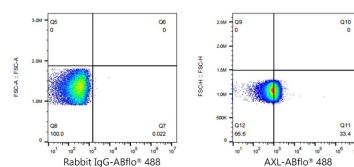
## Validation Data



Flow cytometry:  $1 \times 10^6$  Jurkat cells (negative control, left) and U-251 MG cells (right) were surface-stained with ABflo® 488 Rabbit anti-Human AXL mAb (A22502, 5  $\mu$ l/Test, orange line) or ABflo® 488 Rabbit IgG isotype control (A22069, 5  $\mu$ l/Test, blue line). Non-fluorescently stained cells were used as blank control (red line).



Flow cytometry:  $1 \times 10^6$  U-251 MG cells were surface-stained with ABflo® 488 Rabbit IgG isotype control (A22069, 5  $\mu$ l/Test, left) or ABflo® 488 Rabbit anti-Human AXL mAb (A22502, 5  $\mu$ l/Test, right).



Flow cytometry:  $1 \times 10^6$  Human PBMC cells were surface-stained with ABflo® 488 Rabbit IgG isotype control (A22069, 5  $\mu$ l/Test, left) or ABflo® 488 Rabbit anti-Human AXL mAb (A22502, 5  $\mu$ l/Test, right).