

A22464

Leader in Biomolecular Solutions for Life Science



AHR Rabbit PolymAb®

Catalog No.: A22464

Basic Information

Observed MW

105kDa

Calculated MW

96kDa

Category

SMab Recombinant Monoclonal Antibody

Applications

WB, IHC-P, IF/ICC, ELISA

Cross-Reactivity

Human, Mouse

CloneNo number

ARC53211_ARC53212

Background

The protein encoded by this gene is a ligand-activated helix-loop-helix transcription factor involved in the regulation of biological responses to planar aromatic hydrocarbons. This receptor has been shown to regulate xenobiotic-metabolizing enzymes such as cytochrome P450. Before ligand binding, the encoded protein is sequestered in the cytoplasm; upon ligand binding, this protein moves to the nucleus and stimulates transcription of target genes.

Recommended Dilutions

WB	1:2000 - 1:10000
IHC-P	1:100 - 1:500
IF/ICC	1:50 - 1:200

Immunogen Information

Gene ID

196

Swiss Prot

P35869

Immunogen

Recombinant fusion protein containing a sequence corresponding to amino acids 619-848 of human AHR Rabbit PolymAb® (NP_001612.1).

Synonyms

RP85; bHLHe76

Contact



www.abclonal.com

Product Information

Source

Rabbit

Isotype

IgG

Purification

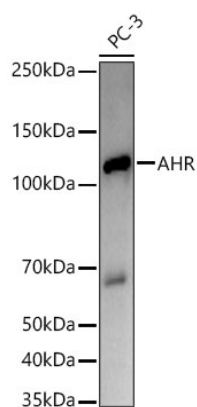
Affinity purification

Storage

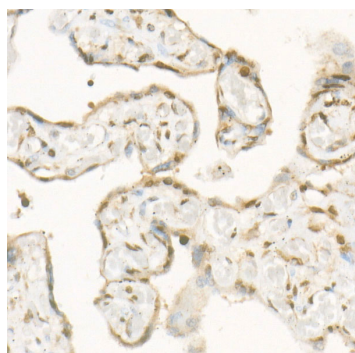
Store at -20°C. Avoid freeze / thaw cycles.

Buffer: PBS with 0.05% proclin300, 0.05% BSA, 50% glycerol, pH7.3.

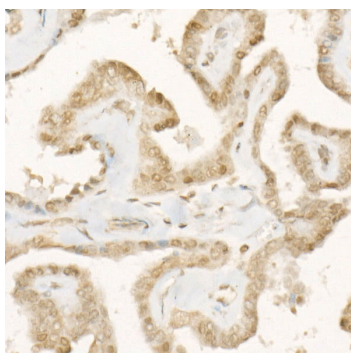
Validation Data



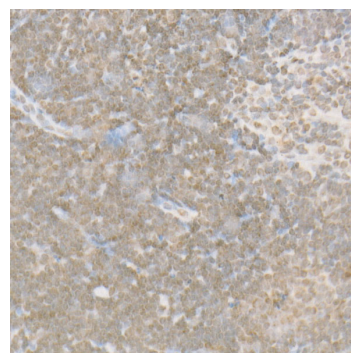
Western blot analysis of PC-3, using AHR Rabbit PolymAb® (A22464) at 1:10000 dilution.
Secondary antibody: HRP Goat Anti-Rabbit IgG (H+L) (AS014) at 1:10000 dilution.
Lysates/proteins: 25µg per lane.
Blocking buffer: 3% nonfat dry milk in TBST.
Detection: ECL Basic Kit (RM00020).
Exposure time: 180s.



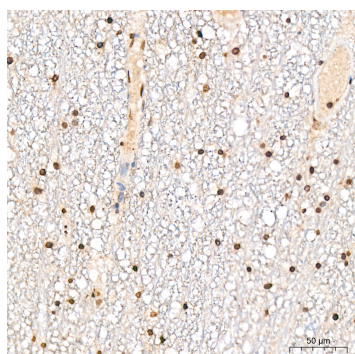
Immunohistochemistry analysis of paraffin-embedded human placenta using AHR Rabbit PolymAb® (A22464) at dilution of 1:500 (40x lens). Perform high pressure antigen retrieval with 10 mM citrate buffer pH 6.0 before commencing with IHC staining protocol.



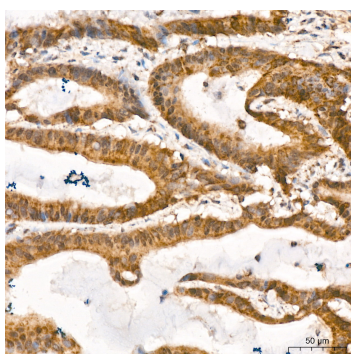
Immunohistochemistry analysis of paraffin-embedded human thyroid cancer using AHR Rabbit PolymAb® (A22464) at dilution of 1:500 (40x lens). Perform high pressure antigen retrieval with 10 mM citrate buffer pH 6.0 before commencing with IHC staining protocol.



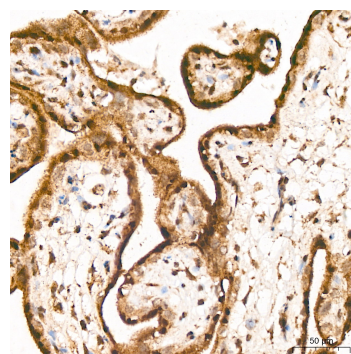
Immunohistochemistry analysis of paraffin-embedded mouse spleen using AHR Rabbit PolymAb® (A22464) at dilution of 1:500 (40x lens). Perform high pressure antigen retrieval with 10 mM citrate buffer pH 6.0 before commencing with IHC staining protocol.



Immunohistochemistry analysis of AHR in paraffin-embedded human brain tissue using AHR Rabbit PolymAb® (A22464) at a dilution of 1:200 (40x lens). High pressure antigen retrieval was performed with 0.01 M citrate buffer (pH 6.0) prior to IHC staining.

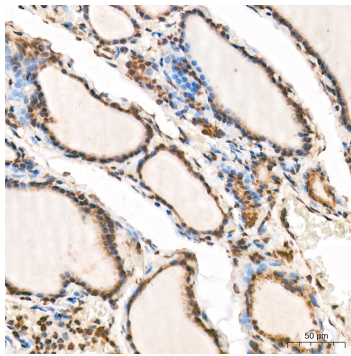


Immunohistochemistry analysis of AHR in paraffin-embedded human colon carcinoma tissue using AHR Rabbit PolymAb® (A22464) at a dilution of 1:200 (40x lens). High pressure antigen retrieval was performed with 0.01 M citrate buffer (pH 6.0) prior to IHC staining.

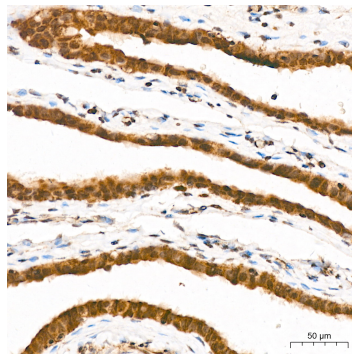


Immunohistochemistry analysis of AHR in paraffin-embedded human placenta tissue using AHR Rabbit PolymAb® (A22464) at a dilution of 1:200 (40x lens). High pressure antigen retrieval was performed with 0.01 M citrate buffer (pH 6.0) prior to IHC staining.

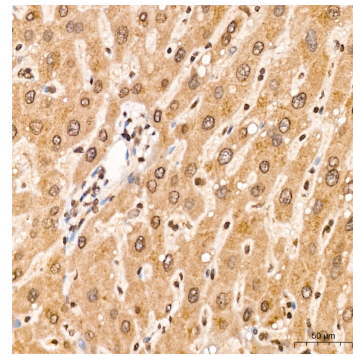
Validation Data



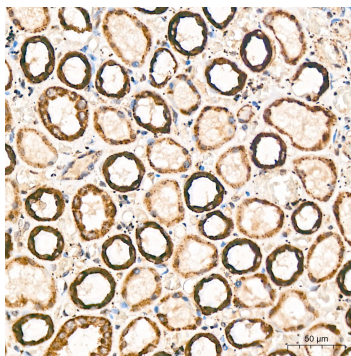
Immunohistochemistry analysis of AHR in paraffin-embedded human thyroid tissue using AHR Rabbit PolymAb® (A22464) at a dilution of 1:200 (40x lens). High pressure antigen retrieval was performed with 0.01 M citrate buffer (pH 6.0) prior to IHC staining.



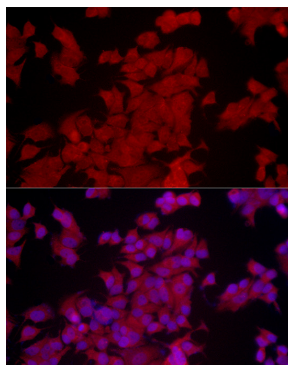
Immunohistochemistry analysis of AHR in paraffin-embedded Human fallopian tube tissue using AHR Rabbit PolymAb® (A22464) at a dilution of 1:200 (40x lens). High pressure antigen retrieval was performed with 0.01 M citrate buffer (pH 6.0) prior to IHC staining.



Immunohistochemistry analysis of AHR in paraffin-embedded human liver tissue using AHR Rabbit PolymAb® (A22464) at a dilution of 1:200 (40x lens). High pressure antigen retrieval was performed with 0.01 M citrate buffer (pH 6.0) prior to IHC staining.



Immunohistochemistry analysis of AHR in paraffin-embedded human kidney tissue using AHR Rabbit PolymAb® (A22464) at a dilution of 1:200 (40x lens). High pressure antigen retrieval was performed with 0.01 M citrate buffer (pH 6.0) prior to IHC staining.



Immunofluorescence analysis of MCF7 using AHR Rabbit PolymAb® (A22464) at dilution of 1:100 (40x lens). Blue: DAPI for nuclear staining.