

# KAP1/TRIM28 Rabbit pAb

Catalog No.: A2245 **3 Publications**

## Basic Information

### Observed MW

120kDa

### Calculated MW

89kDa

### Category

Primary antibody

### Applications

ELISA, WB, IHC-P, IF/ICC, IP

### Cross-Reactivity

Human, Mouse, Rat

## Background

The protein encoded by this gene mediates transcriptional control by interaction with the Kruppel-associated box repression domain found in many transcription factors. The protein localizes to the nucleus and is thought to associate with specific chromatin regions. The protein is a member of the tripartite motif family. This tripartite motif includes three zinc-binding domains, a RING, a B-box type 1 and a B-box type 2, and a coiled-coil region.

## Recommended Dilutions

**WB** 1:1000 - 1:3000**IHC-P** 1:50 - 1:200**IF/ICC** 1:50 - 1:200**IP** 0.5µg-4µg antibody for  
200µg-400µg extracts of  
whole cells

## Immunogen Information

### Gene ID

10155

### Swiss Prot

Q13263

### Immunogen

Recombinant fusion protein containing a sequence corresponding to amino acids 576-835 of human KAP1/KAP1/TRIM28 (NP\_005753.1).

### Synonyms

KAP1; TF1B; RNF96; TIF1B; PPP1R157; TIF1beta; KAP1/TRIM28

## Contact

 | [www.abclonal.com](http://www.abclonal.com)

## Product Information

### Source

Rabbit

### Isotype

IgG

### Purification

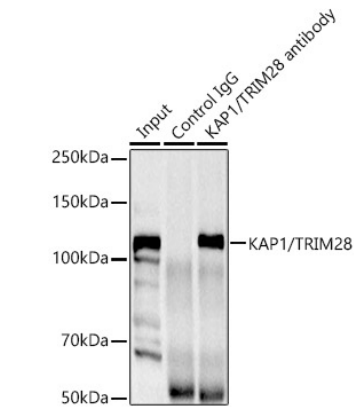
Affinity purification

### Storage

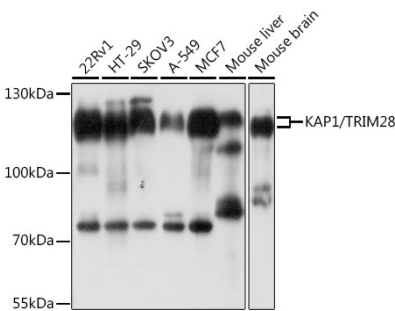
Store at -20°C. Avoid freeze / thaw cycles.

Buffer: PBS with 0.02% sodium azide, 50% glycerol, pH7.3.

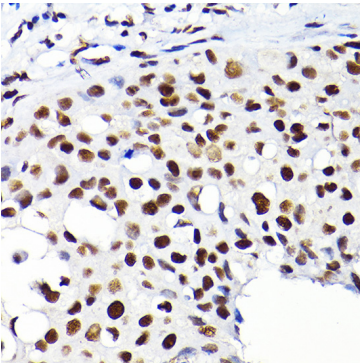
Validation Data



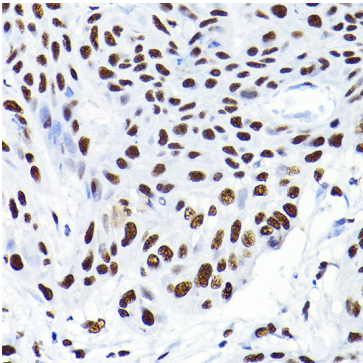
Immunoprecipitation analysis of 300ug extracts of HeLa cells using 3ug KAP1/TRIM28 Rabbit pAb (A2245 1:400). Western blot was performed from the immunoprecipitate using KAP1/TRIM28 Rabbit pAb (A2245) at a dilution of 1:1000.



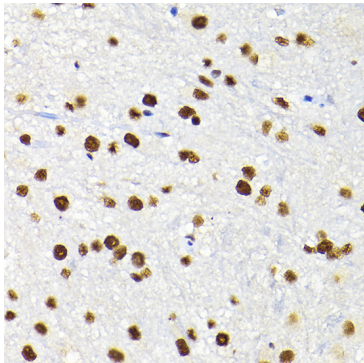
Western blot analysis of various lysates using KAP1/TRIM28 Rabbit pAb (A2245) at 1:1000 dilution. Secondary antibody: HRP Goat Anti-Rabbit IgG (H+L) (AS014) at 1:10000 dilution. Lysates/proteins: 25µg per lane. Blocking buffer: 3% nonfat dry milk in TBST. Detection: ECL Basic Kit (RM00020). Exposure time: 5s.



Immunohistochemistry analysis of KAP1/TRIM28 in paraffin-embedded human breast cancer using KAP1/KAP1/TRIM28 Rabbit pAb (A2245) at dilution of 1:200 (40x lens).Perform high pressure antigen retrieval with 10 mM citrate buffer pH 6.0 before commencing with IHC staining protocol.



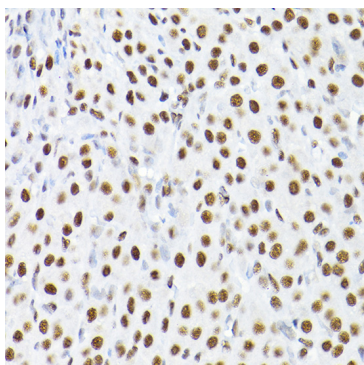
Immunohistochemistry analysis of KAP1/TRIM28 in paraffin-embedded human esophageal cancer using KAP1/KAP1/TRIM28 Rabbit pAb (A2245) at dilution of 1:200 (40x lens).Perform high pressure antigen retrieval with 10 mM citrate buffer pH 6.0 before commencing with IHC staining protocol.



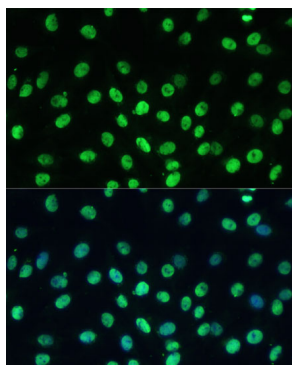
Immunohistochemistry analysis of KAP1/TRIM28 in paraffin-embedded mouse spinal cord using KAP1/KAP1/TRIM28 Rabbit pAb (A2245) at dilution of 1:200 (40x lens).Perform high pressure antigen retrieval with 10 mM citrate buffer pH 6.0 before commencing with IHC staining protocol.

## Validation Data

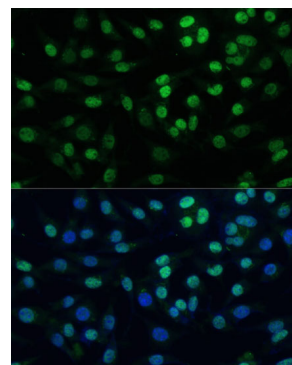
---



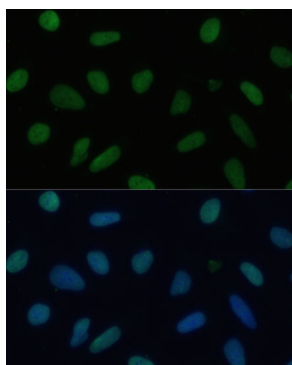
Immunohistochemistry analysis of KAP1/TRIM28 in paraffin-embedded rat ovary using KAP1/KAP1/TRIM28 Rabbit pAb (A2245) at dilution of 1:200 (40x lens). Perform high pressure antigen retrieval with 10 mM citrate buffer pH 6.0 before commencing with IHC staining protocol.



Immunofluorescence analysis of C6 cells using KAP1/TRIM28 Rabbit pAb (A2245) at dilution of 1:100 (40x lens). Secondary antibody: Cy3 Goat Anti-Rabbit IgG (H+L) (AS007) at 1:500 dilution. Blue: DAPI for nuclear staining.



Immunofluorescence analysis of L929 cells using KAP1/TRIM28 Rabbit pAb (A2245) at dilution of 1:100 (40x lens). Secondary antibody: Cy3 Goat Anti-Rabbit IgG (H+L) (AS007) at 1:500 dilution. Blue: DAPI for nuclear staining.



Immunofluorescence analysis of U-2 OS cells using KAP1/TRIM28 Rabbit pAb (A2245) at dilution of 1:100 (40x lens). Secondary antibody: Cy3 Goat Anti-Rabbit IgG (H+L) (AS007) at 1:500 dilution. Blue: DAPI for nuclear staining.