

A22311

Leader in Biomolecular Solutions for Life Science



## ABflo® 647 Rabbit anti-Human CD225/IFITM1 mAb

Catalog No.: A22311

### Basic Information

#### Observed MW

**Calculated MW**  
14kDa

#### Category

SMab Recombinant Monoclonal Antibody

#### Applications

FC (intra)

#### Cross-Reactivity

Human

#### CloneNo number

ARC55310-ABf647

#### Conjugate

ABflo® 647. Ex:648nm. Em:664nm.

### Background

Interferon-induced transmembrane (IFITM) proteins are a family of interferon induced antiviral proteins. The family contains five members, including IFITM1, IFITM2 and IFITM3 that belong to the CD225 superfamily. The protein encoded by this gene restricts cellular entry by diverse viral pathogens, such as influenza A virus, Ebola virus and Sars-CoV-2.

### Recommended Dilutions

**FC (intra)**      5 µl per 10<sup>6</sup> cells in  
100 µl volume

### Immunogen Information

**Gene ID**  
8519

**Swiss Prot**  
P13164

#### Immunogen

Recombinant fusion protein containing a sequence within amino acids 1-80 of human CD225/IFITM1 (NP\_003632.4).

#### Synonyms

9-27; CD225; IFI17; LEU13; DSPA2a

### Contact



[www.abclonal.com](http://www.abclonal.com)

### Product Information

**Source**  
Rabbit

**Isotype**  
IgG

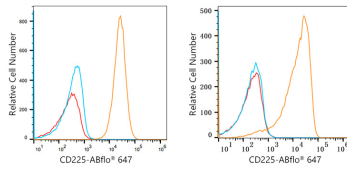
**Purification**  
Affinity purification

#### Storage

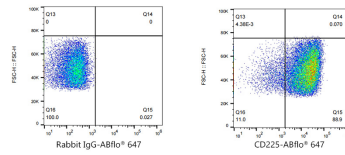
Store at 2-8°C. Avoid freeze.

Buffer: PBS with 0.03% proclin300, 0.2% BSA, pH7.3.

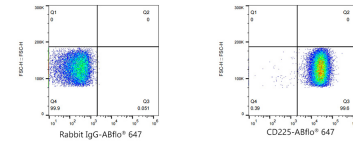
## Validation Data



Flow cytometry:  $1 \times 10^6$  U-251MG cells (Low Expression, left) and K-562 cells (right) were intracellularly-stained with ABflo® 647 Rabbit anti-Human CD225/IFITM1 mAb (A22311, 2  $\mu\text{g}/\text{mL}$ , orange line) or ABflo® 647 Rabbit Ig isotype control (A22070, 2  $\mu\text{g}/\text{mL}$ , blue line). Non-fluorescently stained was used as blank control (red line).



Flow cytometry:  $1 \times 10^6$  K-562 cells were intracellularly-stained with ABflo® 647 Rabbit Ig isotype control (A22070, 5  $\mu\text{l}/\text{Test}$ , left) or ABflo® 647 Rabbit anti-Human CD225/IFITM1 mAb (A22311, 5  $\mu\text{l}/\text{Test}$ , right).



Flow cytometry:  $1 \times 10^6$  U-251 MG cells (Low Expression) were intracellularly-stained with ABflo® 647 Rabbit Ig isotype control (A22070, 5  $\mu\text{l}/\text{Test}$ , left) or ABflo® 647 Rabbit anti-Human CD225/IFITM1 mAb (A22311, 5  $\mu\text{l}/\text{Test}$ , right).