

A22310

Leader in Biomolecular Solutions for Life Science



## ABflo® 488 Rabbit anti-Human CD225/IFITM1 mAb

Catalog No.: A22310

### Basic Information

#### Observed MW

**Calculated MW**  
14kDa

#### Category

SMab Recombinant Monoclonal Antibody

#### Applications

IF/ICC,FC (intra)

#### Cross-Reactivity

Human

#### CloneNo number

ARC55310-ABf488

#### Conjugate

ABflo® 488. Ex:491nm. Em:516nm.

### Background

Interferon-induced transmembrane (IFITM) proteins are a family of interferon induced antiviral proteins. The family contains five members, including IFITM1, IFITM2 and IFITM3 that belong to the CD225 superfamily. The protein encoded by this gene restricts cellular entry by diverse viral pathogens, such as influenza A virus, Ebola virus and Sars-CoV-2.

### Recommended Dilutions

**IF/ICC** 1:50 - 1:200

**FC (intra)** 5 µl per 10<sup>6</sup> cells in  
100 µl volume

### Immunogen Information

#### Gene ID

8519

#### Swiss Prot

P13164

#### Immunogen

Recombinant fusion protein containing a sequence within amino acids 1-80 of human CD225/IFITM1 (NP\_003632.4).

#### Synonyms

9-27; CD225; IFI17; LEU13; DSPA2a

### Contact



[www.abclonal.com](http://www.abclonal.com)

### Product Information

#### Source

Rabbit

#### Isotype

IgG

#### Purification

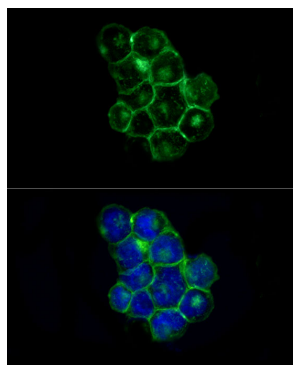
Affinity purification

#### Storage

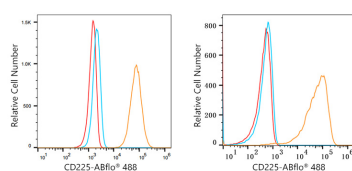
Store at 2-8°C. Avoid freeze.

Buffer: PBS with 0.03% proclin300,0.2% BSA,pH7.3.

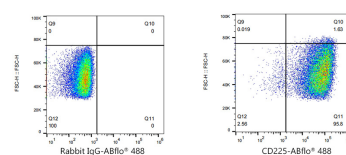
## Validation Data



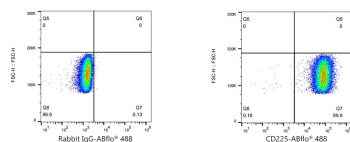
Immunofluorescence analysis of K-562 cells using ABflo® 488 Rabbit anti-Human CD225/IFITM1 mAb (A22310) at dilution of 1:50 (40x lens). Secondary antibody: Cy3 Goat Anti-Rabbit IgG (H+L) (AS007) at 1:500 dilution. Blue: DAPI for nuclear staining.



Flow cytometry:  $1 \times 10^6$  U-251MG cells (Low Expression, left) and K-562 cells (right) were intracellularly-stained with ABflo® 488 Rabbit anti-Human CD225/IFITM1 mAb (A22310, 2  $\mu\text{g}/\text{mL}$ , orange line) or ABflo® 488 Rabbit IgG isotype control (A22069, 2  $\mu\text{g}/\text{mL}$ , blue line). Non-fluorescently stained cells was used as blank control (red line).



Flow cytometry:  $1 \times 10^6$  K-562 cells were intracellularly-stained with ABflo® 488 Rabbit IgG isotype control (A22069, 5  $\mu\text{l}/\text{Test}$ , left) or ABflo® 488 Rabbit anti-Human CD225/IFITM1 mAb (A22310, 5  $\mu\text{l}/\text{Test}$ , right).



Flow cytometry:  $1 \times 10^6$  U-251MG cells (Low Expression) were intracellularly-stained with ABflo® 488 Rabbit IgG isotype control (A22069, 5  $\mu\text{l}/\text{Test}$ , left) or ABflo® 488 Rabbit anti-Human CD225/IFITM1 mAb (A22310, 5  $\mu\text{l}/\text{Test}$ , right).