

A22309

Leader in Biomolecular Solutions for Life Science



ABflo® 647 Rabbit anti-Human CD172a/SIRPα mAb

Catalog No.: A22309

Basic Information

Observed MW

Calculated MW

55kDa

Category

SMab Recombinant Monoclonal Antibody

Applications

FC

Cross-Reactivity

Human

CloneNo number

ARC55236-ABf647

Conjugate

ABflo® 647. Ex:648nm. Em:664nm.

Background

The protein encoded by this gene is a member of the signal-regulatory-protein (SIRP) family, and also belongs to the immunoglobulin superfamily. SIRP family members are receptor-type transmembrane glycoproteins known to be involved in the negative regulation of receptor tyrosine kinase-coupled signaling processes. This protein can be phosphorylated by tyrosine kinases. The phospho-tyrosine residues of this PTP have been shown to recruit SH2 domain containing tyrosine phosphatases (PTP), and serve as substrates of PTPs. This protein was found to participate in signal transduction mediated by various growth factor receptors. CD47 has been demonstrated to be a ligand for this receptor protein. This gene and its product share very high similarity with several other members of the SIRP family. These related genes are located in close proximity to each other on chromosome 20p13. Multiple alternatively spliced transcript variants have been determined for this gene.

Recommended Dilutions

FC 5 µl per 10⁶ cells in
100 µl volume

Immunogen Information

Gene ID

140885

Swiss Prot

P78324

Immunogen

Recombinant fusion protein containing a sequence corresponding to amino acids 31-370 of human CD172a/SIRPα (NP_542970.1).

Synonyms

BIT; MFR; P84; SIRP; MYD-1; SHPS1; CD172A; PTPNS1

Contact



www.abclonal.com

Product Information

Source

Rabbit

Isotype

IgG

Purification

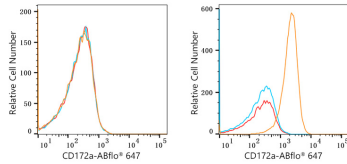
Affinity purification

Storage

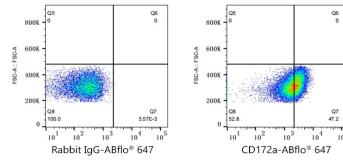
Store at 2-8°C. Avoid freeze.

Buffer: PBS with 0.03% proclin300, 0.2% BSA, pH7.3.

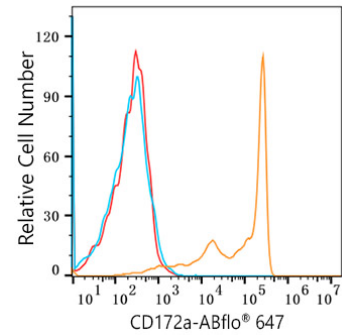
Validation Data



Flow cytometry: 1×10^6 Jurkat cells (negative control, left) and U-937 cells (right) were surface-stained with ABflo® 647 Rabbit anti-Human CD172a/SIRPα mAb (A22309, 2 $\mu\text{g/mL}$, orange line) or ABflo® 647 Rabbit IgG isotype control (A22070, 2 $\mu\text{g/mL}$, blue line). Non-fluorescently stained cells was used as blank control (red line).



Flow cytometry: 1×10^6 U-937 cells were surface-stained with ABflo® 647 Rabbit IgG isotype control (A22070, 5 $\mu\text{l/Test}$, left) or ABflo® 647 Rabbit anti-Human CD172a/SIRPα mAb (A22309, 5 $\mu\text{l/Test}$, right).



Flow cytometry: 1×10^6 Human PBMC were surface-stained with ABflo® 647 Rabbit anti-Human CD172a/SIRPα mAb (A22309, 5 $\mu\text{l/Test}$, orange line) or ABflo® 647 Rabbit IgG isotype control (A22070, 5 $\mu\text{l/Test}$, blue line). Non-fluorescently stained Human PBMC was used as blank control (red line).