

A22298

Leader in Biomolecular Solutions for Life Science



ABflo® 488 Rabbit anti-Human CD51 mAb

Catalog No.: A22298

Basic Information

Observed MW

Calculated MW
116kDa

Category

SMab Recombinant Monoclonal Antibody

Applications

FC (intra)

Cross-Reactivity

Human

CloneNo number

ARC50621-ABf488

Conjugate

ABflo® 488. Ex:491nm. Em:516nm.

Background

The product of this gene belongs to the integrin alpha chain family. Integrins are heterodimeric integral membrane proteins composed of an alpha subunit and a beta subunit that function in cell surface adhesion and signaling. The encoded preproprotein is proteolytically processed to generate light and heavy chains that comprise the alpha V subunit. This subunit associates with beta 1, beta 3, beta 5, beta 6 and beta 8 subunits. The heterodimer consisting of alpha V and beta 3 subunits is also known as the vitronectin receptor. This integrin may regulate angiogenesis and cancer progression. Alternative splicing results in multiple transcript variants. Note that the integrin alpha 5 and integrin alpha V subunits are encoded by distinct genes.

Recommended Dilutions

FC (intra) 5 µl per 10⁶ cells in
100 µl volume

Immunogen Information

Gene ID
3685

Swiss Prot
P06756

Immunogen

A synthetic peptide corresponding to a sequence within amino acids 949-1048 of human CD51 (NP_002201.2).

Synonyms

CD51; MSK8; VNRA; VTNR

Contact



www.abclonal.com

Product Information

Source
Rabbit

Isotype
IgG

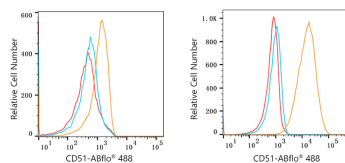
Purification
Affinity purification

Storage

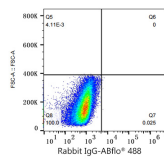
Store at 2-8°C. Avoid freeze.

Buffer: PBS with 0.03% proclin300,0.2% BSA,pH7.3.

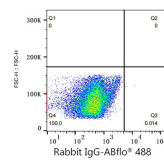
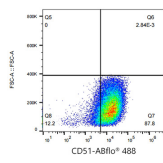
Validation Data



Flow cytometry: 1×10^6 MOLT-4 cells (Low Expression, left) and BeWo cells (right) were intracellularly-stained with ABflo® 488 Rabbit anti-Human CD51 mAb (A22298, 5 μ l/Test, orange line) or ABflo® 488 Rabbit IgG isotype control (A22069, 5 μ l/Test, blue line). Non-fluorescently stained cells were used as blank control (red line).



Flow cytometry: 1×10^6 BeWo cells were intracellularly-stained with ABflo® 488 Rabbit IgG isotype control (A22069, 5 μ l/Test, left) or ABflo® 488 Rabbit anti-Human CD51 mAb (A22298, 5 μ l/Test, right).



Flow cytometry: 1×10^6 MOLT-4 cells were intracellularly-stained with ABflo® 488 Rabbit IgG isotype control (A22069, 5 μ l/Test, left) or ABflo® 488 Rabbit anti-Human CD51 mAb (A22298, 5 μ l/Test, right).

