

A2224

Leader in Biomolecular Solutions for Life Science



## KAT2A Rabbit pAb

Catalog No.: A2224

1 Publications

### Basic Information

#### Observed MW

94kDa

#### Calculated MW

94kDa

#### Category

Polyclonal Antibody

#### Applications

WB, IHC-P, IF/ICC, ELISA

#### Cross-Reactivity

Human, Mouse, Rat

### Background

KAT2A, or GCN5, is a histone acetyltransferase (HAT) that functions primarily as a transcriptional activator. It also functions as a repressor of NF-kappa-B (see MIM 164011) by promoting ubiquitination of the NF-kappa-B subunit RELA (MIM 164014) in a HAT-independent manner (Mao et al., 2009 [PubMed 19339690]).

### Recommended Dilutions

WB	1:100 - 1:500
IF/ICC	1:50 - 1:200
IHC-P	1:50 - 1:200

### Immunogen Information

#### Gene ID

2648

#### Swiss Prot

Q92830

#### Immunogen

Recombinant fusion protein containing a sequence corresponding to amino acids 1-100 of human KAT2A (NP\_066564.2).

#### Synonyms

GCN5; hGCN5; GCN5L2; PCAF-b; KAT2A

### Contact



[www.abclonal.com](http://www.abclonal.com)

### Product Information

#### Source

Rabbit

#### Isotype

IgG

#### Purification

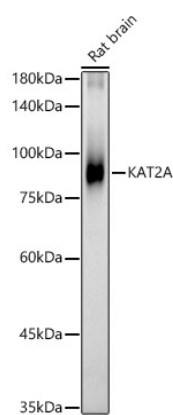
Affinity purification

#### Storage

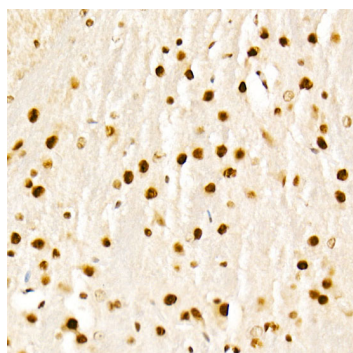
Store at -20°C. Avoid freeze / thaw cycles.

Buffer: PBS with 0.02% sodium azide, 50% glycerol, pH 7.3.

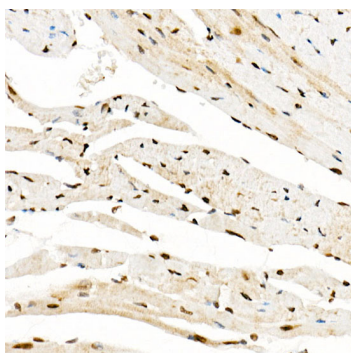
## Validation Data



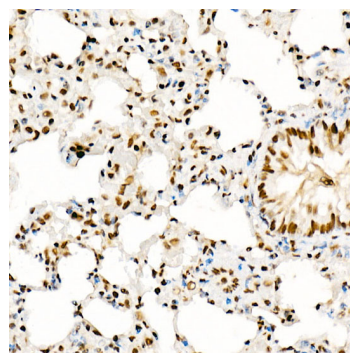
Western blot analysis of lysates from Rat brain, using KAT2A Rabbit pAb (A2224) at 1:400 dilution.  
Secondary antibody: HRP Goat Anti-Rabbit IgG (H+L) (AS014) at 1:10000 dilution.  
Lysates/proteins: 25µg per lane.  
Blocking buffer: 3% nonfat dry milk in TBST.  
Detection: ECL Basic Kit (RM00020).  
Exposure time: 30s.



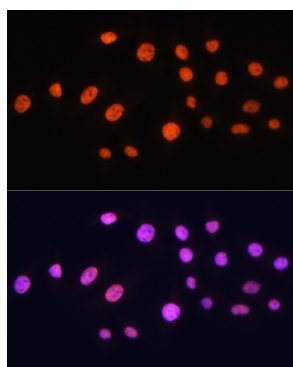
Immunohistochemistry analysis of KAT2A in paraffin-embedded mouse brain using KAT2A Rabbit pAb (A2224) at dilution of 1:50 (40x lens). Perform high pressure antigen retrieval with 10 mM citrate buffer pH 6.0 before commencing with IHC staining protocol.



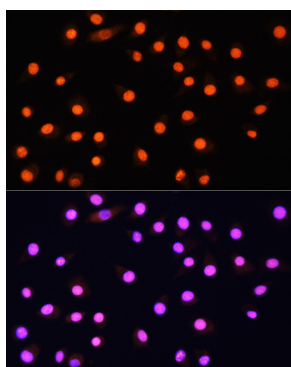
Immunohistochemistry analysis of KAT2A in paraffin-embedded mouse heart using KAT2A Rabbit pAb (A2224) at dilution of 1:50 (40x lens). Perform high pressure antigen retrieval with 10 mM citrate buffer pH 6.0 before commencing with IHC staining protocol.



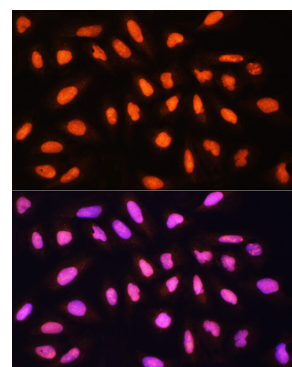
Immunohistochemistry analysis of KAT2A in paraffin-embedded rat lung using KAT2A Rabbit pAb (A2224) at dilution of 1:50 (40x lens). Perform high pressure antigen retrieval with 10 mM citrate buffer pH 6.0 before commencing with IHC staining protocol.



Immunofluorescence analysis of C6 cells using KAT2A Rabbit pAb (A2224) at dilution of 1:100 (40x lens). Secondary antibody: Cy3 Goat Anti-Rabbit IgG (H+L) (AS007) at 1:500 dilution. Blue: DAPI for nuclear staining.



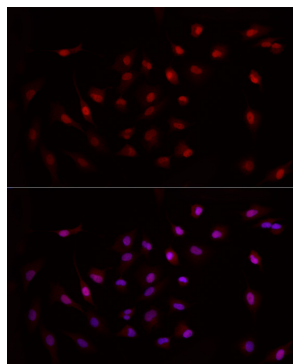
Immunofluorescence analysis of L929 cells using KAT2A Rabbit pAb (A2224) at dilution of 1:100 (40x lens). Secondary antibody: Cy3 Goat Anti-Rabbit IgG (H+L) (AS007) at 1:500 dilution. Blue: DAPI for nuclear staining.



Immunofluorescence analysis of U-2 OS cells using KAT2A Rabbit pAb (A2224) at dilution of 1:100 (40x lens). Secondary antibody: Cy3 Goat Anti-Rabbit IgG (H+L) (AS007) at 1:500 dilution. Blue: DAPI for nuclear staining.

## Validation Data

---



Immunofluorescence analysis of A-549 cells using KAT2A Rabbit pAb (A2224) at dilution of 1:50 (40x lens). Secondary antibody: Cy3 Goat Anti-Rabbit IgG (H+L) (AS007) at 1:500 dilution. Blue: DAPI for nuclear staining.