

A22233

Leader in Biomolecular Solutions for Life Science



Giantin Rabbit pAb

Catalog No.: A22233

Basic Information

Observed MW

376kDa

Calculated MW

376kDa

Category

Polyclonal Antibody

Applications

WB,IF/ICC,ELISA

Cross-Reactivity

Human

Background

Enables RNA binding activity. Involved in protein localization to pericentriolar material. Located in Golgi apparatus and endoplasmic reticulum-Golgi intermediate compartment.

Recommended Dilutions

WB	1:500 - 1:1000
IF/ICC	1:50 - 1:200

Immunogen Information

Gene ID

2804

Swiss Prot

Q14789

Immunogen

Recombinant protein of human Giantin

Synonyms

GCP; GCP372; GOLIM1; Giantin

Contact



www.abclonal.com

Product Information

Source

Rabbit

Isotype

IgG

Purification

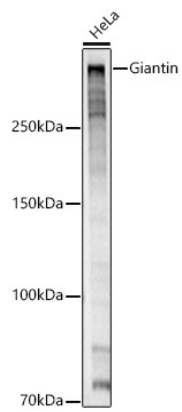
Affinity purification

Storage

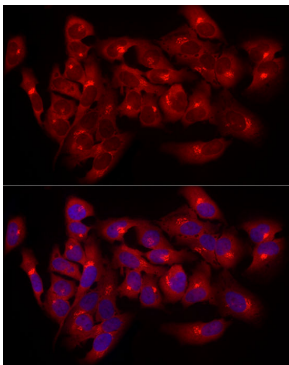
Store at -20°C. Avoid freeze / thaw cycles.

Buffer: PBS with 0.05% proclin300,50% glycerol,pH7.3.

Validation Data



Western blot analysis of HeLa, using Giantin antibody (A22233) at 1:1000 dilution.
Secondary antibody: HRP Goat Anti-Rabbit IgG (H+L) (A5014) at 1:10000 dilution.
Lysates/proteins: 25µg per lane.
Blocking buffer: 3% nonfat dry milk in TBST.
Detection: ECL Basic Kit (RM00020).
Exposure time: 20s.



Immunofluorescence analysis of HeLa cells using Giantin Rabbit pAb (A22233) at dilution of 1:100 (40x lens). Blue: DAPI for nuclear staining.