

A22213

Leader in Biomolecular Solutions for Life Science



Neuropilin-1 (NRP1) Rabbit mAb

Catalog No.: A22213

Recombinant

Basic Information

Observed MW

120-135kDa

Calculated MW

68kDa/71kDa/103kDa

Category

SMab Recombinant Monoclonal Antibody

Applications

WB, ELISA

Cross-Reactivity

Human

CloneNo number

ARC55415

Background

This gene encodes one of two neuropilins, which contain specific protein domains which allow them to participate in several different types of signaling pathways that control cell migration. Neuropilins contain a large N-terminal extracellular domain, made up of complement-binding, coagulation factor V/VIII, and meprin domains. These proteins also contains a short membrane-spanning domain and a small cytoplasmic domain. Neuropilins bind many ligands and various types of co-receptors; they affect cell survival, migration, and attraction. Some of the ligands and co-receptors bound by neuropilins are vascular endothelial growth factor (VEGF) and semaphorin family members. This protein has also been determined to act as a co-receptor for SARS-CoV-2 (which causes COVID-19) to infect host cells.

Recommended Dilutions

WB 1:1000 - 1:5000

Immunogen Information

Gene ID

8829

Swiss Prot

O14786

Immunogen

Recombinant fusion protein containing a sequence corresponding to amino acids 22-644 of human Neuropilin-1 (NRP1) (NP_003864.5).

Synonyms

NP1; NRP; BDCA4; CD304; VEGF165R; Neuropilin-1 (NRP1)

Contact



www.abclonal.com

Product Information

Source

Rabbit

Isotype

IgG

Purification

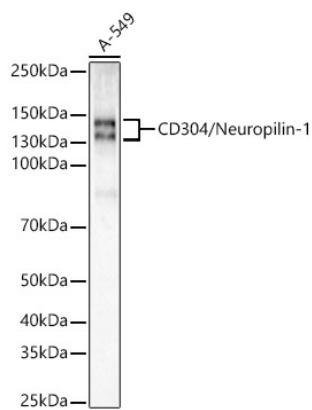
Affinity purification

Storage

Store at -20°C. Avoid freeze / thaw cycles.

Buffer: PBS with 0.05% proclin300, 0.05% BSA, 50% glycerol, pH7.3.

Validation Data



Western blot analysis of A-549, using Neuropilin-1 (NRP1) antibody (A22213) at 1:2000 dilution.
Secondary antibody: HRP Goat Anti-Rabbit IgG (H+L) (AS014) at 1:200000 dilution.
Lysates/proteins: 25µg per lane.
Blocking buffer: 3% nonfat dry milk in TBST.
Detection: ECL Enhanced Kit (RM00021).
Exposure time: 30s.