

A22194

Leader in Biomolecular Solutions for Life Science



ABflo® 647 Rabbit anti-Human CD7 mAb

Catalog No.: A22194

Basic Information

Observed MW

Calculated MW
25kDa

Category

SMab Recombinant Monoclonal Antibody

Applications

FC

Cross-Reactivity

Human

CloneNo number

ARC54668-ABf647

Conjugate

ABflo® 647. Ex:648nm. Em:664nm.

Background

This gene encodes a transmembrane protein which is a member of the immunoglobulin superfamily. This protein is found on thymocytes and mature T cells. It plays an essential role in T-cell interactions and also in T-cell/B-cell interaction during early lymphoid development.

Recommended Dilutions

FC 5 µl per 10⁶ cells in
100 µl volume

Immunogen Information

Gene ID
924

Swiss Prot
P09564

Immunogen

Recombinant fusion protein containing a sequence corresponding to amino acids 26-180 of human CD7 (NP_006128.1).

Synonyms

GP40; TP41; Tp40; LEU-9

Contact



www.abclonal.com

Product Information

Source
Rabbit

Isotype
IgG

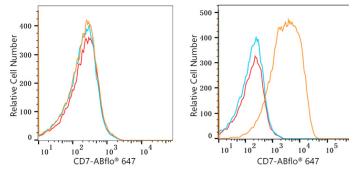
Purification
Affinity purification

Storage

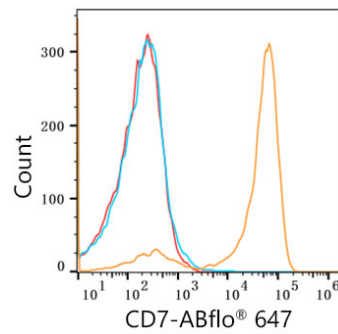
Store at 2-8°C. Avoid freeze.

Buffer: PBS with 0.03% proclin300, 0.2% BSA, pH7.3.

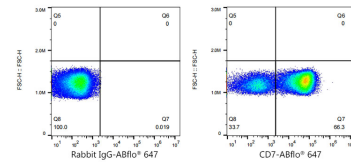
Validation Data



Flow cytometry: 1×10^6 A549 cells (negative control, left) and MOLT-4 cells (right) were surface-stained with ABflo® 647 Rabbit anti-Human CD7 mAb (A22194, 5 μ l/Test, orange line) or ABflo® 647 Rabbit IgG isotype control (A22070, 5 μ l/Test, blue line). Non-fluorescently stained cells were used as blank control (red line).



Flow cytometry: 1×10^6 Human PBMC were surface-stained with ABflo® 647 Rabbit anti-Human CD7 mAb (A22194, 5 μ l/Test, orange line) or ABflo® 647 Rabbit IgG isotype control (A22070, 5 μ l/Test, blue line). Non-fluorescently stained Human PBMC was used as blank control (red line).



Flow cytometry: 1×10^6 Human PBMC cells were surface-stained with ABflo® 647 Rabbit IgG isotype control (A22070, 5 μ l/Test, left) or ABflo® 647 Rabbit anti-Human CD7 mAb (A22194, 5 μ l/Test, right).