

A22191

Leader in Biomolecular Solutions for Life Science



ABflo® 488 Rabbit anti-Human Integrin-β1/CD29 mAb

Catalog No.: A22191

Basic Information

Observed MW

Refer to figures

Calculated MW

87kDa/88kDa/91kDa

Category

SMab Recombinant Monoclonal Antibody

Applications

FC

Cross-Reactivity

Human

CloneNo number

ARC52470-ABf488

Conjugate

ABflo® 488. Ex:491nm. Em:516nm.

Background

Integrins are heterodimeric proteins made up of alpha and beta subunits. At least 18 alpha and 8 beta subunits have been described in mammals. Integrin family members are membrane receptors involved in cell adhesion and recognition in a variety of processes including embryogenesis, hemostasis, tissue repair, immune response and metastatic diffusion of tumor cells. This gene encodes a beta subunit. Multiple alternatively spliced transcript variants which encode different protein isoforms have been found for this gene.

Recommended Dilutions

FC 5 µl per 10⁶ cells in
100 µl volume

Immunogen Information

Gene ID

3688

Swiss Prot

P05556

Immunogen

Recombinant fusion protein containing a sequence corresponding to amino acids 1-728 of human Integrin-β1/CD29 (NP_002202.2).

Synonyms

CD29; FNRB; MDF2; VLAB; GPIIA; MSK12; VLA-BETA

Contact



www.abclonal.com

Product Information

Source

Rabbit

Isotype

IgG

Purification

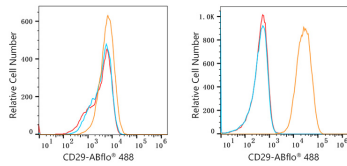
Affinity purification

Storage

Store at 2-8°C. Avoid freeze.

Buffer: PBS with 0.03% proclin300,0.2% BSA,pH7.3.

Validation Data



Flow cytometry: 1×10^6 RPMI 8226 cells (negative control, left) and A549 cells (right) were surface-stained with ABflo® 488 Rabbit anti-Human Integrin- β 1/CD29 mAb(A22191, 5 μ l/Test, orange line) or ABflo® 488 Rabbit IgG isotype control (A22069, 5 μ l/Test, blue line). Non-fluorescently stained cells were used as blank control (red line).