

A2215

Leader in Biomolecular Solutions for Life Science



ALIX / PDCD6IP Rabbit pAb

Catalog No.: A2215

14 Publications

Basic Information

Observed MW

105kDa

Calculated MW

96kDa

Category

Polyclonal Antibody

Applications

WB, IF/ICC, ELISA

Cross-Reactivity

Human, Mouse, Rat

Background

This gene encodes a protein that functions within the ESCRT pathway in the abscission stage of cytokinesis, in intralumenal endosomal vesicle formation, and in enveloped virus budding. Studies using mouse cells have shown that overexpression of this protein can block apoptosis. In addition, the product of this gene binds to the product of the PDCD6 gene, a protein required for apoptosis, in a calcium-dependent manner. This gene product also binds to endophilins, proteins that regulate membrane shape during endocytosis. Overexpression of this gene product and endophilins results in cytoplasmic vacuolization, which may be partly responsible for the protection against cell death. Several alternatively spliced transcript variants encoding different isoforms have been found for this gene. Related pseudogenes have been identified on chromosome 15.

Recommended Dilutions

WB	1:200 - 1:2000
IF/ICC	1:50 - 1:200

Immunogen Information

Gene ID

10015

Swiss Prot

Q8WUM4

Immunogen

Recombinant fusion protein containing a sequence corresponding to amino acids 1-180 of human ALIX / PDCD6IP (NP_037506.2).

Synonyms

AIP1; ALIX; HP95; DRIP4; MCPH29; ALIX / PDCD6IP

Contact



www.abclonal.com

Product Information

Source

Rabbit

Isotype

IgG

Purification

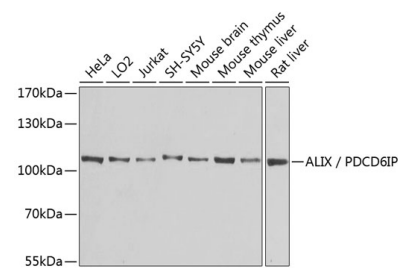
Affinity purification

Storage

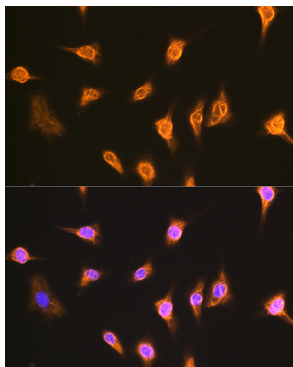
Store at -20°C. Avoid freeze / thaw cycles.

Buffer: PBS with 0.02% sodium azide, 50% glycerol, pH 7.3.

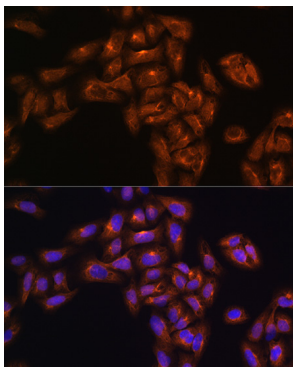
Validation Data



Western blot analysis of extracts of various cell lines, using ALIX / PDCD6IP antibody (A2215) at 1:1000 dilution.
Secondary antibody: HRP Goat Anti-Rabbit IgG (H+L) (AS014) at 1:10000 dilution.
Lysates/proteins: 25µg per lane.
Blocking buffer: 3% nonfat dry milk in TBST.
Detection: ECL Enhanced Kit (RM00021).
Exposure time: 3min.



Immunofluorescence analysis of L929 cells using ALIX / PDCD6IP antibody (A2215) at dilution of 1:100. Blue: DAPI for nuclear staining.



Immunofluorescence analysis of U-251MG cells using ALIX / PDCD6IP antibody (A2215) at dilution of 1:100. Blue: DAPI for nuclear staining.