

A22117

Leader in Biomolecular Solutions for Life Science



RBM20 Rabbit pAb

Catalog No.: A22117

Basic Information

Observed MW

150kDa

Calculated MW

134kDa

Category

Polyclonal Antibody

Applications

WB, ELISA

Cross-Reactivity

Human

Background

This gene encodes a protein that binds RNA and regulates splicing. Mutations in this gene have been associated with familial dilated cardiomyopathy.

Recommended Dilutions

WB 1:100 - 1:500

Immunogen Information

Gene ID

282996

Swiss Prot

Q5T481

Immunogen

Recombinant fusion protein containing a sequence corresponding to amino acids 820-980 of human RBM20 (NP_001127835.2).

Synonyms

Contact



www.abclonal.com

Product Information

Source

Rabbit

Isotype

IgG

Purification

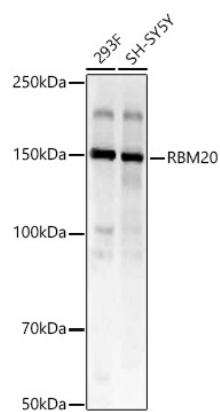
Affinity purification

Storage

Store at -20°C. Avoid freeze / thaw cycles.

Buffer: PBS with 0.05% proclin300, 50% glycerol, pH7.3.

Validation Data



Western blot analysis of various lysates, using RBM20 Rabbit pAb (A22117) at 1:400 dilution.
Secondary antibody: HRP Goat Anti-Rabbit IgG (H+L) (A5014) at 1:10000 dilution.
Lysates/proteins: 25ug per lane.
Blocking buffer: 3% nonfat dry milk in TBST.
Detection: ECL Basic Kit (RM00020).
Exposure time: 10s.