

A22063

Leader in Biomolecular Solutions for Life Science



ABflo® 488 Rabbit anti-Human CD27 mAb

Catalog No.: A22063

Basic Information

Observed MW

Refer to figures

Calculated MW

29kDa

Category

SMab Recombinant Monoclonal Antibody

Applications

FC

Cross-Reactivity

Human

CloneNo number

ARC54542-ABf488

Conjugate

ABflo® 488. Ex:491nm. Em:516nm.

Background

The protein encoded by this gene is a member of the TNF-receptor superfamily. This receptor is required for generation and long-term maintenance of T cell immunity. It binds to ligand CD70, and plays a key role in regulating B-cell activation and immunoglobulin synthesis. This receptor transduces signals that lead to the activation of NF-kappaB and MAPK8/JNK. Adaptor proteins TRAF2 and TRAF5 have been shown to mediate the signaling process of this receptor. CD27-binding protein (SIVA), a proapoptotic protein, can bind to this receptor and is thought to play an important role in the apoptosis induced by this receptor.

Recommended Dilutions

FC 5 µl per 10⁶ cells in
100 µl volume

Immunogen Information

Gene ID

939

Swiss Prot

P26842

Immunogen

Recombinant fusion protein containing a sequence corresponding to amino acids 21-192 of human CD27 (NP_001233.2).

Synonyms

T14; S152; Tp55; TNFRSF7; S152. LPFS2

Contact



www.abclonal.com

Product Information

Source

Rabbit

Isotype

IgG

Purification

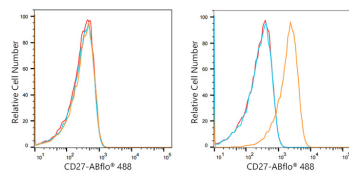
Affinity purification

Storage

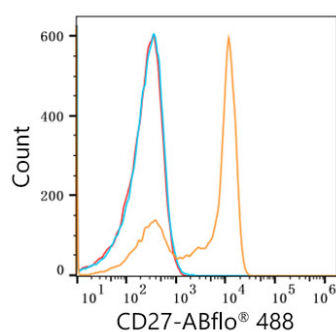
Store at 2-8°C. Avoid freeze.

Buffer: PBS with 0.03% proclin300,0.2% BSA,pH7.3.

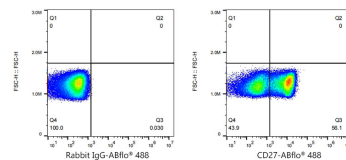
Validation Data



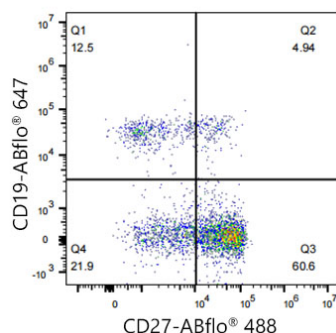
Flow cytometry: 1×10^6 HEL cells (negative control, left) and Daudi cells (right) were surface-stained with ABflo® 488 Rabbit anti-Human CD27 mAb (A22063, 5 μ l/Test, orange line) or ABflo® 488 Rabbit IgG isotype control (A22069, 5 μ l/Test, blue line). Non-fluorescently stained cells were used as blank control (red line).



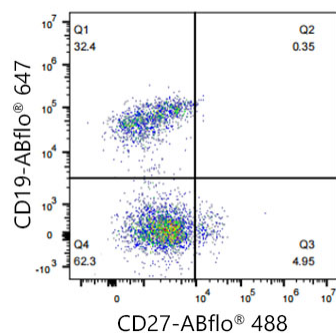
Flow cytometry: 1×10^6 Human PBMC were surface-stained with ABflo® 488 Rabbit anti-Human CD27 mAb (A22063, 5 μ l/Test, orange line) or ABflo® 488 Rabbit IgG isotype control (A22069, 5 μ l/Test, blue line). Non-fluorescently stained Human PBMC was used as blank control (red line).



Flow cytometry: 1×10^6 Human PBMC cells were surface-stained with ABflo® 488 Rabbit IgG isotype control (A22069, 5 μ l/Test, left) or ABflo® 488 Rabbit anti-Human CD27 mAb (A22063, 5 μ l/Test, right).



Flow cytometry: 1×10^6 Human PBMC cells were surface-stained with ABflo® 488 Rabbit IgG isotype control (A22069, 5 μ l/Test) or ABflo® 488 Rabbit anti-Human CD27 mAb (A22063, 5 μ l/Test). The cells were simultaneously stained with ABflo® 647 Rabbit anti-Human/Monkey CD19 mAb (A23009, 5 μ l/Test).



Flow cytometry: 1×10^6 Monkey PBMC cells were surface-stained with ABflo® 488 Rabbit IgG isotype control (A22069, 5 μ l/Test) or ABflo® 488 Rabbit anti-Human CD27 mAb (A22063, 5 μ l/Test). The cells were simultaneously stained with ABflo® 647 Rabbit anti-Human/Monkey CD19 mAb (A23009, 5 μ l/Test).