

A22053

Leader in Biomolecular Solutions for Life Science



# Alpha-Fetoprotein (AFP) Rabbit mAb

Catalog No.: A22053

Recombinant

## Basic Information

### Observed MW

65kDa

### Calculated MW

69kDa

### Category

SMab Recombinant Monoclonal Antibody

### Applications

WB, ELISA

### Cross-Reactivity

Human

### CloneNo number

ARC54866

## Background

This gene encodes alpha-fetoprotein, a major plasma protein produced by the yolk sac and the liver during fetal life. Alpha-fetoprotein expression in adults is often associated with hepatocarcinoma and with teratoma, and has prognostic value for managing advanced gastric cancer. However, hereditary persistence of alpha-fetoprotein may also be found in individuals with no obvious pathology. The protein is thought to be the fetal counterpart of serum albumin, and the alpha-fetoprotein and albumin genes are present in tandem in the same transcriptional orientation on chromosome 4. Alpha-fetoprotein is found in monomeric as well as dimeric and trimeric forms, and binds copper, nickel, fatty acids and bilirubin. The level of alpha-fetoprotein in amniotic fluid is used to measure renal loss of protein to screen for spina bifida and anencephaly.

## Recommended Dilutions

WB 1:1000 - 1:5000

## Immunogen Information

### Gene ID

174

### Swiss Prot

P02771

### Immunogen

Recombinant fusion protein containing a sequence corresponding to amino acids 19-609 of human Alpha-Fetoprotein (AFP) (NP\_001125.1).

### Synonyms

AFPD; FETA; HPAFP; Alpha-Fetoprotein (AFP)

## Contact



[www.abclonal.com](http://www.abclonal.com)

## Product Information

### Source

Rabbit

### Isotype

IgG

### Purification

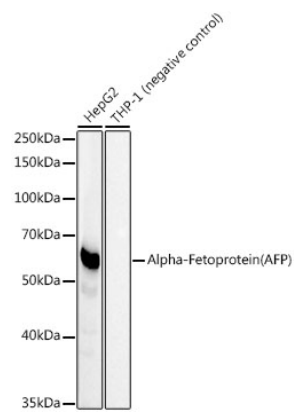
Affinity purification

### Storage

Store at -20°C. Avoid freeze / thaw cycles.

Buffer: PBS with 0.05% proclin300, 0.05% BSA, 50% glycerol, pH7.3.

# Validation Data



Western blot analysis of extracts of various cell lines, using Alpha-Fetoprotein (AFP) antibody (A22053) at 1:2000 dilution.  
Secondary antibody: HRP Goat Anti-Rabbit IgG (H+L) (AS014) at 1:10000 dilution.  
Lysates/proteins: 25µg per lane.  
Blocking buffer: 3% nonfat dry milk in TBST.  
Detection: ECL Basic Kit (RM00020).  
Exposure time: 30s.