

A22050

Leader in Biomolecular Solutions for Life Science



Rev-erb beta/NR1D2 Rabbit mAb

Catalog No.: A22050

Recombinant

Basic Information

Observed MW

70kDa

Calculated MW

65kDa

Category

SMab Recombinant Monoclonal Antibody

Applications

WB, ELISA

Cross-Reactivity

Mouse, Rat

CloneNo number

ARC54887

Background

This gene encodes a member of the nuclear hormone receptor family, specifically the NR1 subfamily of receptors. The encoded protein functions as a transcriptional repressor and may play a role in circadian rhythms and carbohydrate and lipid metabolism. Alternatively spliced transcript variants have been described.

Recommended Dilutions

WB 1:1000 - 1:5000

Immunogen Information

Gene ID

9975

Swiss Prot

Q14995

Immunogen

Recombinant fusion protein containing a sequence corresponding to amino acids 220-300 of human Rev-erb beta/NR1D2 (NP_005117.3).

Synonyms

RVR; BD73; EAR-1R; REVERBB; REVERBbeta; Rev-erb beta/NR1D2

Contact



www.abclonal.com

Product Information

Source

Rabbit

Isotype

IgG

Purification

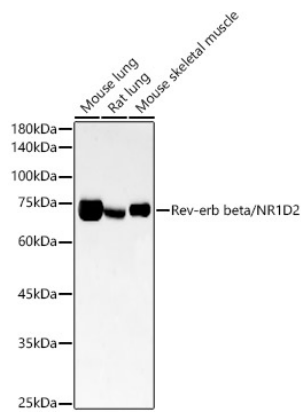
Affinity purification

Storage

Store at -20°C. Avoid freeze / thaw cycles.

Buffer: PBS with 0.05% proclin300, 0.05% BSA, 50% glycerol, pH7.3.

Validation Data



Western blot analysis of various lysates, using Rev-erb beta/NR1D2 Rabbit mAb (A22050) at 1:2000 dilution.
Secondary antibody: HRP Goat Anti-Rabbit IgG (H+L) (AS014) at 1:10000 dilution.
Lysates/proteins: 25µg per lane.
Blocking buffer: 3% nonfat dry milk in TBST.
Detection: ECL Basic Kit (RM00020).
Exposure time: 180s.