

A22037

Leader in Biomolecular Solutions for Life Science



## CD132/IL-2 R gamma Rabbit mAb

Catalog No.: A22037

Recombinant

### Basic Information

#### Observed MW

50-70kDa

#### Calculated MW

42kDa

#### Category

SMab Recombinant Monoclonal Antibody

#### Applications

WB, ELISA

#### Cross-Reactivity

Human, Mouse

#### CloneNo number

ARC54566

### Background

The protein encoded by this gene is an important signaling component of many interleukin receptors, including those of interleukin -2, -4, -7 and -21, and is thus referred to as the common gamma chain. Mutations in this gene cause X-linked severe combined immunodeficiency (XSCID), as well as X-linked combined immunodeficiency (XCID), a less severe immunodeficiency disorder.

### Recommended Dilutions

WB 1:1000 - 1:5000

### Immunogen Information

#### Gene ID

3561

#### Swiss Prot

P31785

#### Immunogen

A synthetic peptide corresponding to a sequence within amino acids 250-350 of human CD132/IL-2 R gamma (NP\_000197.1).

#### Synonyms

P64; CIDX; IMD4; CD132; SCIDX; IL-2RG; SCIDX1; CD132/IL-2 R gamma

### Contact



[www.abclonal.com](http://www.abclonal.com)

### Product Information

#### Source

Rabbit

#### Isotype

IgG

#### Purification

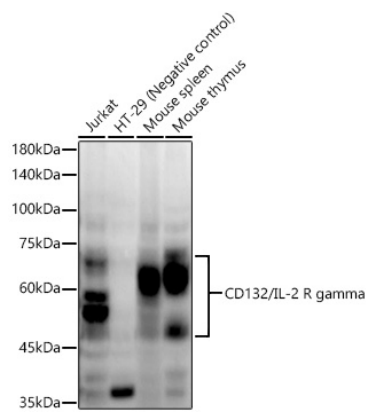
Affinity purification

#### Storage

Store at -20°C. Avoid freeze / thaw cycles.

Buffer: PBS with 0.05% proclin300, 0.05% BSA, 50% glycerol, pH7.3.

Validation Data



Western blot analysis of extracts of various cell lines, using CD132/IL-2 R gamma antibody (A22037) at 1:2000 dilution.  
Secondary antibody: HRP Goat Anti-Rabbit IgG (H+L) (AS014) at 1:10000 dilution.  
Lysates/proteins: 25µg per lane.  
Blocking buffer: 3% nonfat dry milk in TBST.  
Detection: ECL Enhanced Kit (RM00021).  
Exposure time: 60s.