

A22000

Leader in Biomolecular Solutions for Life Science



[KD Validated] MAD1/MAD1L1 Rabbit pAb

Catalog No.: A22000

Basic Information

Observed MW

83kDa

Calculated MW

83kDa

Category

Polyclonal Antibody

Applications

WB, ELISA

Cross-Reactivity

Human

Background

MAD1L1 is a component of the mitotic spindle-assembly checkpoint that prevents the onset of anaphase until all chromosome are properly aligned at the metaphase plate. MAD1L1 functions as a homodimer and interacts with MAD2L1. MAD1L1 may play a role in cell cycle control and tumor suppression. Alternative splicing results in multiple transcript variants.

Recommended Dilutions

WB 1:100 - 1:500

Immunogen Information

Gene ID

8379

Swiss Prot

Q9Y6D9

Immunogen

Recombinant fusion protein containing a sequence corresponding to amino acids 351-718 of human MAD1/MAD1L1 (NP_003541.2).

Synonyms

MAD1; MVA7; PIG9; TP53I9; TXBP181; [KD Validated] MAD1/MAD1L1

Contact



www.abclonal.com

Product Information

Source

Rabbit

Isotype

IgG

Purification

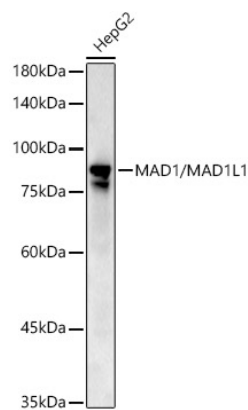
Affinity purification

Storage

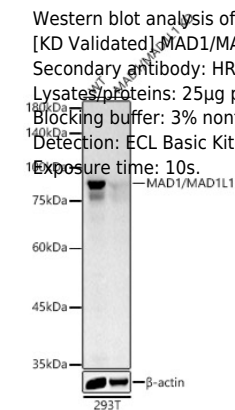
Store at -20°C. Avoid freeze / thaw cycles.

Buffer: PBS with 0.05% proclin300, 50% glycerol, pH7.3.

Validation Data



Western blot analysis of lysates from HepG2 cells, using [KD Validated] MAD1/MAD1L1 Rabbit pAb (A22000) at 1:500 dilution.
Secondary antibody: HRP Goat Anti-Rabbit IgG (H+L) (AS014) at 1:10000 dilution.
Lysates/proteins: 25µg per lane.
Blocking buffer: 3% nonfat dry milk in TBST.
Detection: ECL Basic Kit (RM00020).
Exposure time: 10s.



Western blot analysis of lysates from wild type (WT) and MAD1/MAD1L1 knockdown (KD) 293T cells, using [KD Validated] MAD1/MAD1L1 Rabbit pAb (A22000) at 1:500 dilution.
Secondary antibody: HRP Goat Anti-Rabbit IgG (H+L) (AS014) at 1:10000 dilution.
Lysates/proteins: 25µg per lane.
Blocking buffer: 3% nonfat dry milk in TBST.
Detection: ECL Basic Kit (RM00020).
Exposure time: 10s.