

A2200

Leader in Biomolecular Solutions for Life Science



DCTN2 Rabbit pAb

Catalog No.: A2200

1 Publications

Basic Information

Observed MW

44kDa

Calculated MW

44kDa

Category

Polyclonal Antibody

Applications

WB, IF/ICC, ELISA

Cross-Reactivity

Human, Rat

Background

This gene encodes a 50-kD subunit of dynactin, a macromolecular complex consisting of 10-11 subunits ranging in size from 22 to 150 kD. Dynactin binds to both microtubules and cytoplasmic dynein. It is involved in a diverse array of cellular functions, including ER-to-Golgi transport, the centripetal movement of lysosomes and endosomes, spindle formation, chromosome movement, nuclear positioning, and axonogenesis. This subunit is present in 4-5 copies per dynactin molecule. It contains three short alpha-helical coiled-coil domains that may mediate association with self or other dynactin subunits. It may interact directly with the largest subunit (p150) of dynactin and may affix p150 in place. Multiple alternatively spliced transcript variants encoding distinct isoforms have been found for this gene.

Recommended Dilutions

WB	1:500 - 1:2000
IF/ICC	1:20 - 1:50

Immunogen Information

Gene ID

10540

Swiss Prot

Q13561

Immunogen

Recombinant fusion protein containing a sequence corresponding to amino acids 50-320 of human DCTN2 (NP_006391.1).

Synonyms

RBP50; DCTN50; HEL-S-77; DYNAMITIN; DCTN2

Contact



www.abclonal.com

Product Information

Source

Rabbit

Isotype

IgG

Purification

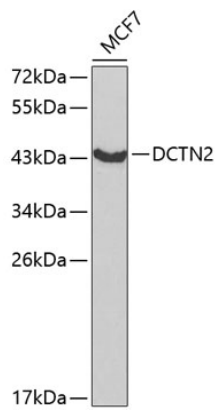
Affinity purification

Storage

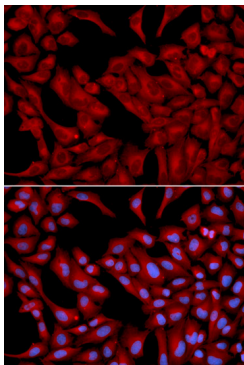
Store at -20°C. Avoid freeze / thaw cycles.

Buffer: PBS with 0.02% sodium azide, 50% glycerol, pH 7.3.

Validation Data



Western blot analysis of extracts of MCF-7 cells, using DCTN2 antibody (A2200) at 1:1000 dilution.
Secondary antibody: HRP Goat Anti-Rabbit IgG (H+L) (A5014) at 1:10000 dilution.
Lysates/proteins: 25µg per lane.
Blocking buffer: 3% nonfat dry milk in TBST.



Immunofluorescence analysis of U2OS cells using DCTN2 antibody (A2200). Blue: DAPI for nuclear staining.