

A21975

Leader in Biomolecular Solutions for Life Science



ERK1 Rabbit mAb

Catalog No.: A21975

Recombinant

Basic Information

Observed MW

44kDa

Calculated MW

43kDa

Category

SMab Recombinant Monoclonal Antibody

Applications

WB,IF/ICC,ELISA

Cross-Reactivity

Rat

CloneNo number

ARC51164

Background

The protein encoded by this gene is a member of the MAP kinase family. MAP kinases, also known as extracellular signal-regulated kinases (ERKs), act in a signaling cascade that regulates various cellular processes such as proliferation, differentiation, and cell cycle progression in response to a variety of extracellular signals. This kinase is activated by upstream kinases, resulting in its translocation to the nucleus where it phosphorylates nuclear targets. Alternatively spliced transcript variants encoding different protein isoforms have been described.

Recommended Dilutions

| | |
|--------|------------------|
| WB | 1:2000 - 1:10000 |
| IF/ICC | 1:50 - 1:200 |

Immunogen Information

Gene ID

5595

Swiss Prot

P27361

Immunogen

A synthetic peptide corresponding to a sequence within amino acids 200-300 of human ERK1/2 (P27361/P28482).

Synonyms

ERK1; ERT2; ERK-1; PRKM3; P44ERK1; P44MAPK; HS44KDAP; HUMKER1A; p44-ERK1; p44-MAPK

Contact



www.abclonal.com

Product Information

Source

Rabbit

Isotype

IgG

Purification

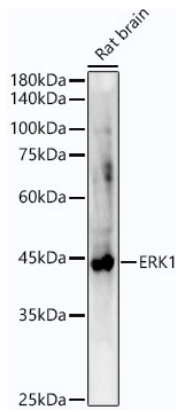
Affinity purification

Storage

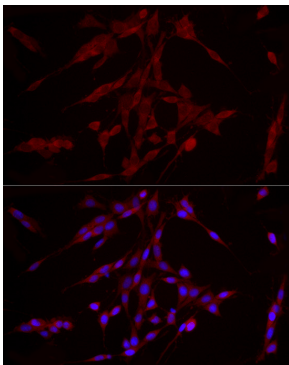
Store at -20°C. Avoid freeze / thaw cycles.

Buffer: PBS with 0.05% proclin300,0.05% BSA,50% glycerol,pH7.3.

Validation Data



Western blot analysis of lysates from Rat brain, using ERK1 Rabbit mAb (A21975) at 1:27000 dilution.
Secondary antibody: HRP Goat Anti-Rabbit IgG (H+L) (AS014) at 1:10000 dilution.
Lysates/proteins: 25µg per lane.
Blocking buffer: 3% nonfat dry milk in TBST.
Detection: ECL Basic Kit (RM00020).
Exposure time: 30s.



Immunofluorescence analysis of PC-12 cells using ERK1 Rabbit mAb (A21975) at dilution of 1:200 (40x lens). Secondary antibody: Cy3 Goat Anti-Rabbit IgG (H+L) (AS007) at 1:500 dilution. Blue: DAPI for nuclear staining.