

A21972

Leader in Biomolecular Solutions for Life Science



Alpha-1 Antitrypsin (SERPINA1) Rabbit mAb

Catalog No.: A21972 **Recombinant**

Basic Information

Observed MW

Refer to figures

Calculated MW

47kDa

Category

SMab Recombinant Monoclonal Antibody

Applications

IF/ICC,ELISA

Cross-Reactivity

Human

CloneNo number

ARC54184

Background

The protein encoded by this gene is a serine protease inhibitor belonging to the serpin superfamily whose targets include elastase, plasmin, thrombin, trypsin, chymotrypsin, and plasminogen activator. This protein is produced in the liver, the bone marrow, by lymphocytic and monocytic cells in lymphoid tissue, and by the Paneth cells of the gut. Defects in this gene are associated with chronic obstructive pulmonary disease, emphysema, and chronic liver disease. Several transcript variants encoding the same protein have been found for this gene.

Recommended Dilutions

IF/ICC 1:50 - 1:200

Immunogen Information

Gene ID

5265

Swiss Prot

P01009

Immunogen

Recombinant fusion protein containing a sequence corresponding to amino acids 25-418 of human Alpha-1 Antitrypsin (SERPINA1) (NP_000286.3).

Synonyms

PI; A1A; AAT; PI1; A1AT; nNIF; PRO2275; alpha1AT; Alpha-1 Antitrypsin (SERPINA1)

Contact



www.abclonal.com

Product Information

Source

Rabbit

Isotype

IgG

Purification

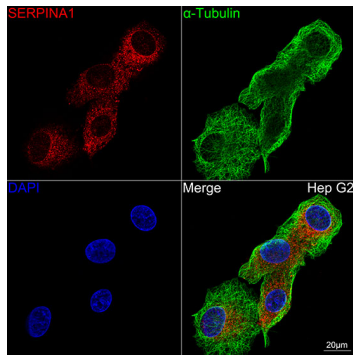
Affinity purification

Storage

Store at -20°C. Avoid freeze / thaw cycles.

Buffer: PBS with 0.05% proclin300,0.05% BSA,50% glycerol,pH7.3.

Validation Data



Confocal imaging of Hep G2 cells using Alpha-1 Antitrypsin (SERPINA1) Rabbit mAb (A21972, at dilution of 1:100) (Red). The cells were counterstained with α -Tubulin Mouse mAb (AC012, dilution 1:400) (Green). DAPI was used for nuclear staining (blue). Objective: 100x.