

A21968

Leader in Biomolecular Solutions for Life Science



DRP1 Rabbit mAb

Catalog No.: A21968

Recombinant

Basic Information

Observed MW

78kDa~82kDa

Calculated MW

82kDa

Category

SMab Recombinant Monoclonal Antibody

Applications

WB,IF/ICC,IP,ELISA

Cross-Reactivity

Human,Mouse,Rat

CloneNo number

ARC54410

Background

This gene encodes a member of the dynamin superfamily of GTPases. The encoded protein mediates mitochondrial and peroxisomal division, and is involved in developmentally regulated apoptosis and programmed necrosis. Dysfunction of this gene is implicated in several neurological disorders, including Alzheimer's disease. Mutations in this gene are associated with the autosomal dominant disorder, encephalopathy, lethal, due to defective mitochondrial and peroxisomal fission (EMPF). Alternative splicing results in multiple transcript variants encoding different isoforms.

Recommended Dilutions

WB 1:500 - 1:1000

IF/ICC 1:50 - 1:200

IP 0.5µg-4µg antibody for
200µg-400µg extracts of
whole cells

Immunogen Information

Gene ID

10059

Swiss Prot

O00429

Immunogen

A synthetic peptide corresponding to a sequence within amino acids 561-670 of human DRP1 (NP_036192.2).

Synonyms

DLP1; DRP1; DVLP; EMPF; OPA5; EMPF1; DYMPLE; HDYNIV

Contact



www.abclonal.com

Product Information

Source

Rabbit

Isotype

IgG

Purification

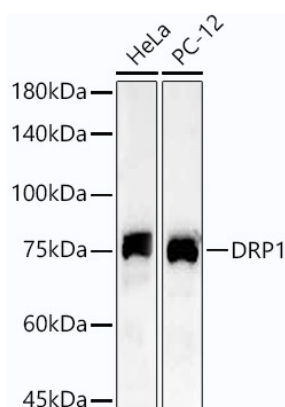
Affinity purification

Storage

Store at -20°C. Avoid freeze / thaw cycles.

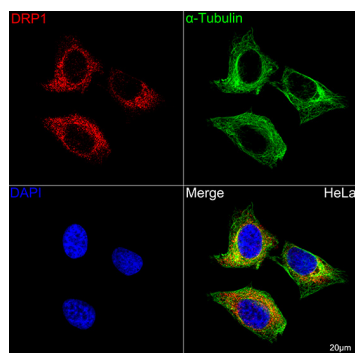
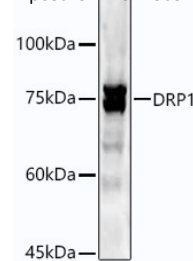
Buffer: PBS with 0.05% proclin300,0.05% BSA,50% glycerol,pH7.3.

Validation Data

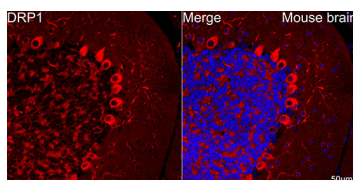


Western blot analysis of various lysates using DRP1 Rabbit mAb (A21968) at 1:1000 dilution.
 Secondary antibody: HRP Goat Anti-Rabbit IgG (H+L) (A5014) at 1:10000 dilution.
 Lysates/proteins: 25µg per lane.
 Blocking buffer: 3% nonfat dry milk in TBST.
 Detection: ECL Basic Kit (RM00020).
 Exposure time: 30s.

Western blot analysis of lysates from NIH/3T3 cells, using DRP1 Rabbit mAb (A21968) at 1:1000 dilution.
 Secondary antibody: HRP Goat Anti-Rabbit IgG (H+L) (A5014) at 1:10000 dilution.
 Lysates/proteins: 25µg per lane.
 Blocking buffer: 3% nonfat dry milk in TBST.
 Detection: ECL Basic Kit (RM00020).
 Exposure time: 180s.

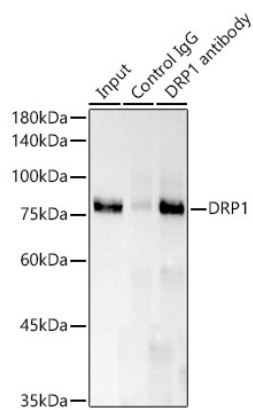


Confocal imaging of HeLa cells using DRP1 Rabbit mAb (A21968, dilution 1:200) followed by a further incubation with Cy3 Goat Anti-Rabbit IgG (H+L) (A5007, dilution 1:500) (Red). The cells were counterstained with α-Tubulin Mouse mAb (AC012, dilution 1:400) followed by incubation with ABflo® 488-conjugated Goat Anti-Mouse IgG (H+L) Ab (AS076, dilution 1:500) (Green). DAPI was used for nuclear staining (Blue). Objective: 100x.



Confocal imaging of paraffin-embedded Mouse brain tissue using DRP1 Rabbit mAb (A21968, dilution 1:200) followed by a further incubation with Cy3 Goat Anti-Rabbit IgG (H+L) (A5007, dilution 1:500) (Red). DAPI was used for nuclear staining (Blue). Microwave antigen retrieval performed with 0.01M Citrate Buffer(pH 6.0) prior to IF staining. Objective: 40x.

Validation Data



Immunoprecipitation analysis of 300 µg extracts of HeLa cells using 3 µg DRP1 antibody (A21968). Western blot was performed from the immunoprecipitate using DRP1 antibody (A21968) at a dilution of 1:5000.