

A21966

Leader in Biomolecular Solutions for Life Science



Sin3A Rabbit mAb

Catalog No.: A21966

Recombinant

Basic Information

Observed MW

151kDa

Calculated MW

145kDa

Category

SMab Recombinant Monoclonal Antibody

Applications

WB, ELISA

Cross-Reactivity

Human, Mouse, Rat

CloneNo number

ARC54250

Background

The protein encoded by this gene is a transcriptional regulatory protein. It contains paired amphipathic helix (PAH) domains, which are important for protein-protein interactions and may mediate repression by the Mad-Max complex.

Recommended Dilutions

WB 1:1000 - 1:5000

Immunogen Information

Gene ID

25942

Swiss Prot

Q96ST3

Immunogen

A synthetic peptide corresponding to a sequence within amino acids 1-100 of human Sin3A (NP_056292.1).

Synonyms

WITKOS; DEL15Q24; CHR15DELq24; Sin3A

Contact



www.abclonal.com

Product Information

Source

Rabbit

Isotype

IgG

Purification

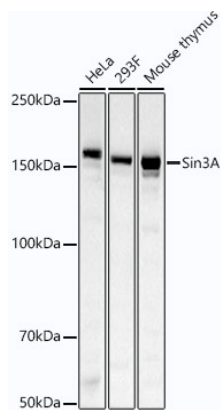
Affinity purification

Storage

Store at -20°C. Avoid freeze / thaw cycles.

Buffer: PBS with 0.05% proclin300, 0.05% BSA, 50% glycerol, pH7.3.

Validation Data



Western blot analysis of extracts of various cell lines, using Sin3A antibody (A21966) at 1:2000 dilution.
Secondary antibody: HRP Goat Anti-Rabbit IgG (H+L) (A5014) at 1:10000 dilution.
Lysates/proteins: 25µg per lane.
Blocking buffer: 3% nonfat dry milk in TBST.
Detection: ECL Basic Kit (RM00020).
Exposure time: 30s.