

A21965

Leader in Biomolecular Solutions for Life Science



# Calretinin Rabbit mAb

Catalog No.: A21965

Recombinant

## Basic Information

### Observed MW

29kDa

### Calculated MW

32kDa

### Category

SMab Recombinant Monoclonal Antibody

### Applications

WB, IHC-P, IF/ICC, ELISA

### Cross-Reactivity

Human, Mouse, Rat

### CloneNo number

ARC53565

## Background

This gene encodes an intracellular calcium-binding protein belonging to the troponin C superfamily. Members of this protein family have six EF-hand domains which bind calcium. This protein plays a role in diverse cellular functions, including message targeting and intracellular calcium buffering. It also functions as a modulator of neuronal excitability, and is a diagnostic marker for some human diseases, including Hirschsprung disease and some cancers. Alternative splicing results in multiple transcript variants.

## Recommended Dilutions

WB	1:10000 - 1:170000
IHC-P	1:100 - 1:500
IF/ICC	1:50 - 1:200

## Immunogen Information

### Gene ID

794

### Swiss Prot

P22676

### Immunogen

Recombinant fusion protein containing a sequence corresponding to amino acids 1-271 of human Calretinin (NP\_001731.2).

### Synonyms

CR; CAL2; CAB29; Calretinin

## Contact



[www.abclonal.com](http://www.abclonal.com)

## Product Information

### Source

Rabbit

### Isotype

IgG

### Purification

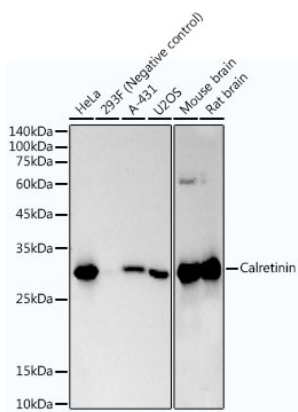
Affinity purification

### Storage

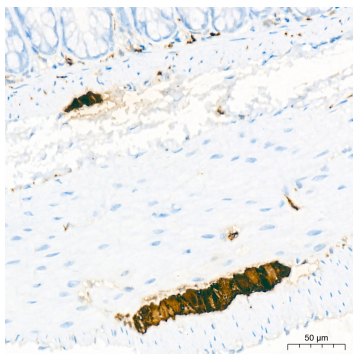
Store at -20°C. Avoid freeze / thaw cycles.

Buffer: PBS with 0.05% proclin300, 0.05% BSA, 50% glycerol, pH7.3.

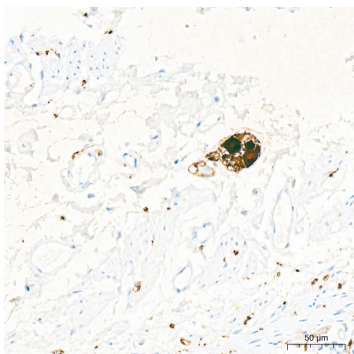
Validation Data



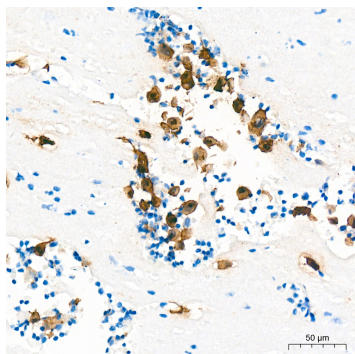
Western blot analysis of various lysates using Calretinin Rabbit mAb (A21965) at 1:170000 dilution. Secondary antibody: HRP Goat Anti-Rabbit IgG (H+L) (A5014) at 1:10000 dilution. Lysates/proteins: 25µg per lane. Blocking buffer: 3% nonfat dry milk in TBST. Detection: ECL Basic Kit (RM00020). Exposure time: 30s.



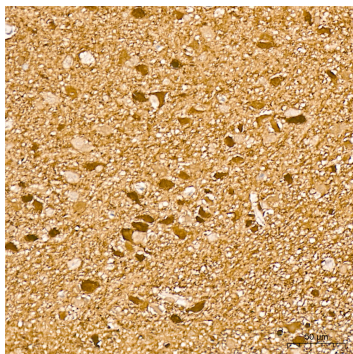
Immunohistochemistry analysis of Calretinin in paraffin-embedded rat colon tissue using Calretinin Rabbit mAb (A21965) at a dilution of 1:400 (40x lens). High pressure antigen retrieval was performed with 0.01 M citrate buffer (pH 6.0) prior to IHC staining.



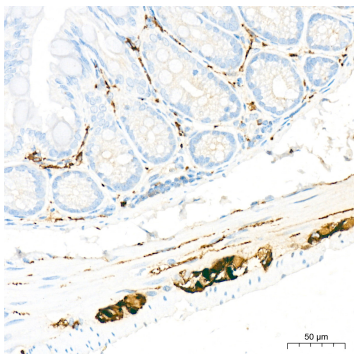
Immunohistochemistry analysis of Calretinin in paraffin-embedded human colon tissue using Calretinin Rabbit mAb (A21965) at a dilution of 1:400 (40x lens). High pressure antigen retrieval was performed with 0.01 M citrate buffer (pH 6.0) prior to IHC staining.



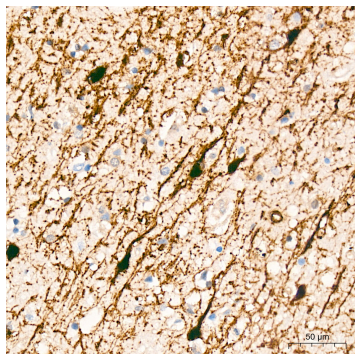
Immunohistochemistry analysis of Calretinin in paraffin-embedded human Mesothelioma tissue using Calretinin Rabbit mAb (A21965) at a dilution of 1:400 (40x lens). High pressure antigen retrieval was performed with 0.01 M citrate buffer (pH 6.0) prior to IHC staining.



Immunohistochemistry analysis of Calretinin in paraffin-embedded rat brain tissue using Calretinin Rabbit mAb (A21965) at a dilution of 1:400 (40x lens). High pressure antigen retrieval was performed with 0.01 M citrate buffer (pH 6.0) prior to IHC staining.

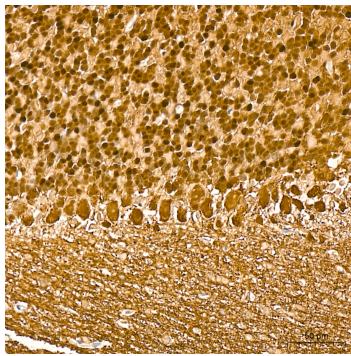


Immunohistochemistry analysis of Calretinin in paraffin-embedded mouse colon tissue using Calretinin Rabbit mAb (A21965) at a dilution of 1:400 (40x lens). High pressure antigen retrieval was performed with 0.01 M citrate buffer (pH 6.0) prior to IHC staining.

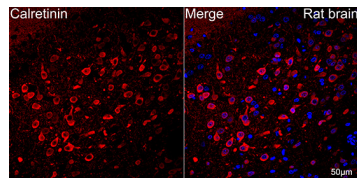


Immunohistochemistry analysis of Calretinin in paraffin-embedded human brain tissue using Calretinin Rabbit mAb (A21965) at a dilution of 1:400 (40x lens). High pressure antigen retrieval was performed with 0.01 M citrate buffer (pH 6.0) prior to IHC staining.

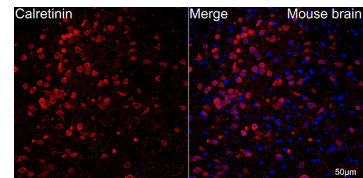
## Validation Data



Immunohistochemistry analysis of Calretinin in paraffin-embedded mouse brain tissue using Calretinin Rabbit mAb (A21965) at a dilution of 1:400 (40x lens). High pressure antigen retrieval was performed with 0.01 M citrate buffer (pH 6.0) prior to IHC staining.



Confocal imaging of paraffin-embedded Rat brain tissue using Calretinin Rabbit mAb (A21965, dilution 1:200) followed by a further incubation with Cy3 Goat Anti-Rabbit IgG (H+L) (AS007, dilution 1:500) (Red). DAPI was used for nuclear staining (Blue). Objective: 40x. Perform microwave antigen retrieval with 0.01 M citrate buffer (pH 6.0) prior to IF staining.



Confocal imaging of paraffin-embedded Mouse brain tissue using Calretinin Rabbit mAb (A21965, dilution 1:200) followed by a further incubation with Cy3 Goat Anti-Rabbit IgG (H+L) (AS007, dilution 1:500) (Red). DAPI was used for nuclear staining (Blue). Objective: 40x. Perform microwave antigen retrieval with 0.01 M citrate buffer (pH 6.0) prior to IF staining.