

A2196

Leader in Biomolecular Solutions for Life Science



## Claudin 1 Rabbit pAb

Catalog No.: A2196

29 Publications

### Basic Information

#### Observed MW

20kDa

#### Calculated MW

23kDa

#### Category

Mouse Monoclonal Antibody

#### Applications

WB, ELISA

#### Cross-Reactivity

Human

### Background

Tight junctions represent one mode of cell-to-cell adhesion in epithelial or endothelial cell sheets, forming continuous seals around cells and serving as a physical barrier to prevent solutes and water from passing freely through the paracellular space. These junctions are comprised of sets of continuous networking strands in the outwardly facing cytoplasmic leaflet, with complementary grooves in the inwardly facing extracytoplasmic leaflet. The protein encoded by this gene, a member of the claudin family, is an integral membrane protein and a component of tight junction strands. Loss of function mutations result in neonatal ichthyosis-sclerosing cholangitis syndrome.

### Recommended Dilutions

WB 1:500 - 1:1000

### Immunogen Information

#### Gene ID

9076

#### Swiss Prot

O95832

#### Immunogen

A synthetic peptide corresponding to a sequence within amino acids 137-211 of human Claudin 1 (NP\_066924.1).

#### Synonyms

CLD1; SEMPI; ILVASC; Claudin 1

### Contact



[www.abclonal.com](http://www.abclonal.com)

### Product Information

#### Source

Rabbit

#### Isotype

IgG

#### Purification

Affinity purification

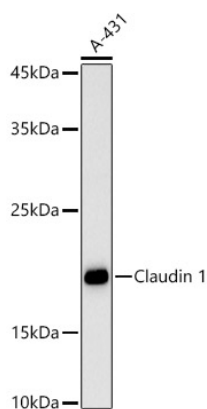
#### Storage

Store at -20°C. Avoid freeze / thaw cycles.

Buffer: PBS with 0.05% proclin300, 50% glycerol, pH7.3.

## Validation Data

---



Western blot analysis of A-431, using Claudin 1 Rabbit pAb (A2196) at 1:500 dilution.  
Secondary antibody: HRP Goat Anti-Rabbit IgG (H+L) (A5014) at 1:10000 dilution.  
Lysates/proteins: 25ug per lane.  
Blocking buffer: 3% nonfat dry milk in TBST.  
Detection: ECL Basic Kit (RM00020).  
Exposure time: 30s.