

A21946

Leader in Biomolecular Solutions for Life Science



ABflo® 647 Rabbit anti-Human CD48 mAb

Catalog No.: A21946

Basic Information

Observed MW

Calculated MW
28kDa

Category

SMab Recombinant Monoclonal Antibody

Applications

FC

Cross-Reactivity

Human

CloneNo number

ARC53039-ABf647

Conjugate

ABflo® 647. Ex:648nm. Em:664nm.

Background

This gene encodes a member of the CD2 subfamily of immunoglobulin-like receptors which includes SLAM (signaling lymphocyte activation molecules) proteins. The encoded protein is found on the surface of lymphocytes and other immune cells, dendritic cells and endothelial cells, and participates in activation and differentiation pathways in these cells. The encoded protein does not have a transmembrane domain, however, but is held at the cell surface by a GPI anchor via a C-terminal domain which maybe cleaved to yield a soluble form of the receptor. Multiple transcript variants encoding different isoforms have been found for this gene.

Recommended Dilutions

FC 5 µl per 10⁶ cells in
100 µl volume

Immunogen Information

Gene ID
962

Swiss Prot
P09326

Immunogen

Recombinant fusion protein containing a sequence corresponding to amino acids 27-220 of human CD48(NP_001769.2)

Synonyms

BCM1; BLAST; hCD48; mCD48; BLAST1; SLAMF2; MEM-102

Contact



www.abclonal.com

Product Information

Source
Rabbit

Isotype
IgG

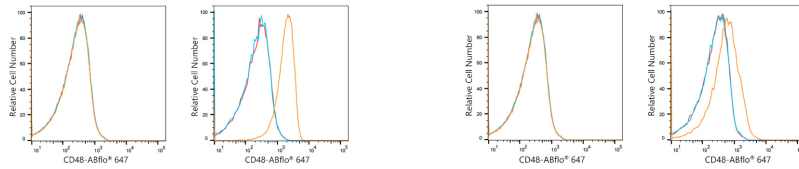
Purification
Affinity purification

Storage

Store at 2-8°C. Avoid freeze.

Buffer: PBS with 0.03% proclin300,0.2% BSA,pH7.3.

Validation Data



Flow cytometry: 1×10^6 K-562 cells (negative control, left) and Human PBMC (right) were surface-stained with ABflo® 647 Rabbit anti-Human CD48 mAb (A21946, 5 μ l/Test, orange line) or ABflo® 647 Rabbit IgG isotype control (A22070, 5 μ l/Test, blue line). Non-fluorescently stained cells were used as blank control (red line).

Flow cytometry: 1×10^6 K-562 cells (negative control, left) and Daudi cells (right) were surface-stained with ABflo® 647 Rabbit anti-Human CD48 mAb (A21946, 5 μ l/Test, orange line) or ABflo® 647 Rabbit IgG isotype control (A22070, 5 μ l/Test, blue line). Non-fluorescently stained cells were used as blank control (red line).