

A21939

Leader in Biomolecular Solutions for Life Science



ABflo® 488 Rabbit anti-Human CD64 mAb

Catalog No.: A21939

Basic Information

Observed MW

Calculated MW

43kDa

Category

SMab Recombinant Monoclonal Antibody

Applications

FC

Cross-Reactivity

Human

CloneNo number

ARC53680-ABf488

Conjugate

ABflo® 488. Ex:491nm. Em:516nm.

Background

This gene encodes a protein that plays an important role in the immune response. This protein is a high-affinity Fc-gamma receptor. The gene is one of three related gene family members located on chromosome 1.

Recommended Dilutions

FC 5 µl per 10⁶ cells in
100 µl volume

Immunogen Information

Gene ID

2209

Swiss Prot

P12314

Immunogen

Recombinant fusion protein containing a sequence corresponding to amino acids 16-288 of human CD64 (NP_000557.1).

Synonyms

CD64; FCG1; FCRI; CD64A; FCGR1; IGFR1; FcgammaRI

Contact



www.abclonal.com

Product Information

Source

Rabbit

Isotype

IgG

Purification

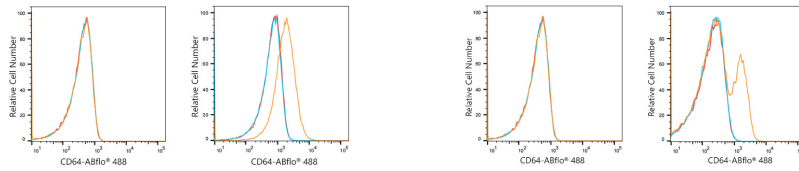
Affinity purification

Storage

Store at 2-8°C. Avoid freeze.

Buffer: PBS with 0.03% proclin300,0.2% BSA,pH7.3.

Validation Data



Flow cytometry: 1×10^6 K-562 cells (negative control, left) and THP-1 cells (right) were surface-stained with ABflo® 488 Rabbit anti-Human CD64 mAb (A21939, 5 μ l/Test, orange line) or ABflo® 488 Rabbit IgG isotype control (A22069, 5 μ l/Test, blue line). Non-fluorescently stained cells were used as blank control (red line).

Flow cytometry: 1×10^6 K-562 cells (negative control, left) and Human PBMC (right) were surface-stained with ABflo® 488 Rabbit anti-Human CD64 mAb (A21939, 5 μ l/Test, orange line) or ABflo® 488 Rabbit IgG isotype control (A22069, 5 μ l/Test, blue line). Non-fluorescently stained cells were used as blank control (red line).