

A21918

Leader in Biomolecular Solutions for Life Science



[KD Validated] Aurora B Rabbit mAb

Catalog No.: A21918

Recombinant

Basic Information

Observed MW

39kDa

Calculated MW

39kDa

Category

SMab Recombinant Monoclonal Antibody

Applications

WB,IF/ICC,ELISA

Cross-Reactivity

Human,Mouse,Rat

CloneNo number

ARC50892

Background

This gene encodes a member of the aurora kinase subfamily of serine/threonine kinases. The genes encoding the other two members of this subfamily are located on chromosomes 19 and 20. These kinases participate in the regulation of alignment and segregation of chromosomes during mitosis and meiosis through association with microtubules. A pseudogene of this gene is located on chromosome 8. Alternatively spliced transcript variants have been found for this gene.

Recommended Dilutions

WB 1:500 - 1:1000

IF/ICC 1:1000 - 1:2000

Immunogen Information

Gene ID

9212

Swiss Prot

Q96GD4

Immunogen

A synthetic peptide corresponding to a sequence within amino acids 1-100 of human Aurora B (NP_004208.2).

Synonyms

AIK2; AIM1; ARK2; AurB; IPL1; STK5; AIM-1; ARK-2; STK-1; STK12; PPP1R48; aurkb-sv1; aurkb-sv2; [KD Validated] Aurora B

Contact



www.abclonal.com

Product Information

Source

Rabbit

Isotype

IgG

Purification

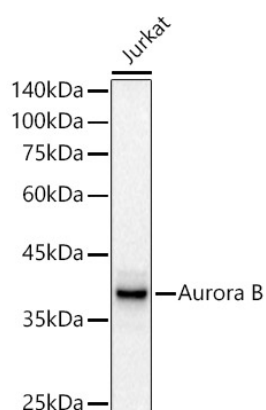
Affinity purification

Storage

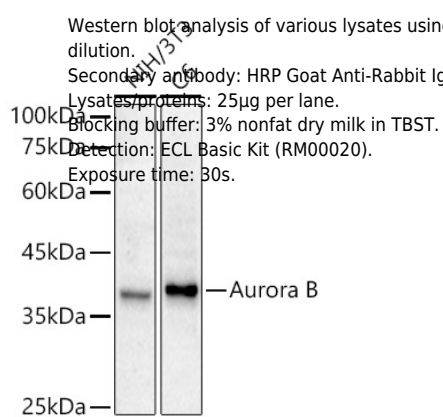
Store at -20°C. Avoid freeze / thaw cycles.

Buffer: PBS with 0.05% proclin300,0.05% BSA,50% glycerol,pH7.3.

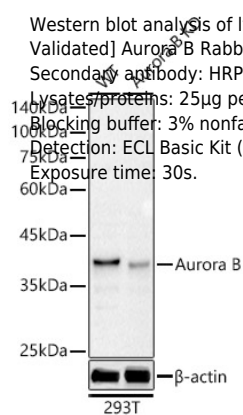
Validation Data



Western blot analysis of lysates from Jurkat cells, using [KD Validated] Aurora B Rabbit mAb (A21918) at 1:1000 dilution.
 Secondary antibody: HRP Goat Anti-Rabbit IgG (H+L) (AS014) at 1:10000 dilution.
 Lysates/proteins: 25µg per lane.
 Blocking buffer: 3% nonfat dry milk in TBST.
 Detection: ECL Basic Kit (RM00020).
 Exposure time: 30s.

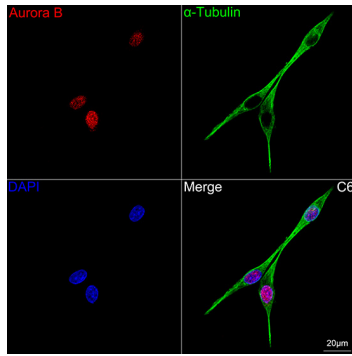


Western blot analysis of various lysates using [KD Validated] Aurora B Rabbit mAb (A21918) at 1:1000 dilution.
 Secondary antibody: HRP Goat Anti-Rabbit IgG (H+L) (AS014) at 1:10000 dilution.
 Lysates/proteins: 25µg per lane.
 Blocking buffer: 3% nonfat dry milk in TBST.
 Detection: ECL Basic Kit (RM00020).
 Exposure time: 30s.



Western blot analysis of lysates from wild type (WT) and Aurora B knockdown (KD) 293T cells, using [KD Validated] Aurora B Rabbit mAb (A21918) at 1:1000 dilution.
 Secondary antibody: HRP Goat Anti-Rabbit IgG (H+L) (AS014) at 1:10000 dilution.
 Lysates/proteins: 25µg per lane.
 Blocking buffer: 3% nonfat dry milk in TBST.
 Detection: ECL Basic Kit (RM00020).
 Exposure time: 30s.

Validation Data



Confocal imaging of C6 cells using [KD Validated] Aurora B Rabbit mAb (A21918, dilution 1:1600) followed by a further incubation with Cy3 Goat Anti-Rabbit IgG (H+L) (AS007, dilution 1:500) (Red). The cells were counterstained with α -Tubulin Mouse mAb (AC012, dilution 1:400) followed by incubation with ABflo® 488-conjugated Goat Anti-Mouse IgG (H+L) Ab (AS076, dilution 1:500) (Green). DAPI was used for nuclear staining (Blue). Objective: 100x.