

A21912

Leader in Biomolecular Solutions for Life Science



IFNGR1 Rabbit mAb

Catalog No.: A21912 **Recombinant**

Basic Information

Observed MW

40-100kDa

Calculated MW

54kDa

Category

SMab Recombinant Monoclonal Antibody

Applications

WB,IF/ICC,ELISA

Cross-Reactivity

Human,Mouse,Rat

CloneNo number

ARC0662

Background

This gene (IFNGR1) encodes the ligand-binding chain (alpha) of the gamma interferon receptor. Human interferon-gamma receptor is a heterodimer of IFNGR1 and IFNGR2. A genetic variation in IFNGR1 is associated with susceptibility to Helicobacter pylori infection. In addition, defects in IFNGR1 are a cause of mendelian susceptibility to mycobacterial disease, also known as familial disseminated atypical mycobacterial infection.

Recommended Dilutions

WB	1:500 - 1:2000
IF/ICC	1:50 - 1:200

Immunogen Information

Gene ID

3459

Swiss Prot

P15260

Immunogen

A synthetic peptide corresponding to a sequence within amino acids 390-489 of human IFNGR1 (P15260).

Synonyms

CD119; IFNGR; IMD27A; IMD27B; IFNGR1

Contact



www.abclonal.com

Product Information

Source

Rabbit

Isotype

IgG

Purification

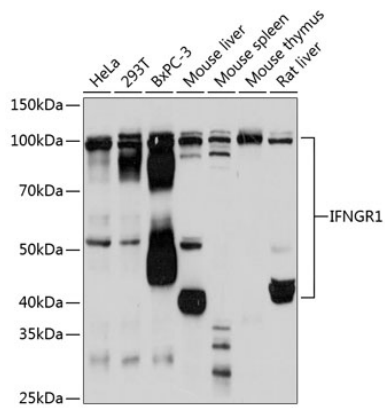
Affinity purification

Storage

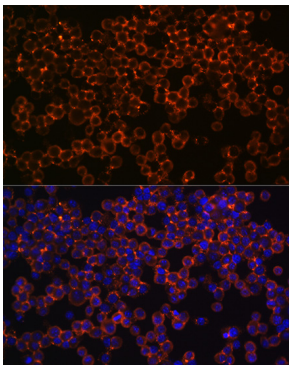
Store at -20°C. Avoid freeze / thaw cycles.

Buffer: PBS with 0.02% sodium azide,0.05% BSA,50% glycerol,pH7.3.

Validation Data



Western blot analysis of extracts of various cell lines, using IFNGR1 Rabbit mAb (A21912) at 1:1000 dilution.
Secondary antibody: HRP Goat Anti-Rabbit IgG (H+L) (AS014) at 1:10000 dilution.
Lysates/proteins: 25µg per lane.
Blocking buffer: 3% nonfat dry milk in TBST.
Detection: ECL Basic Kit (RM00020).
Exposure time: 30s.



Immunofluorescence analysis of THP-1 cells using IFNGR1 Rabbit mAb (A21912) at dilution of 1:100 (40x lens). Blue: DAPI for nuclear staining.