

A21873

Leader in Biomolecular Solutions for Life Science



[KD Validated] Bcl-2 Rabbit mAb

Catalog No.: A21873

Recombinant

Basic Information

Observed MW

26kDa/

Calculated MW

26kDa

Category

SMab Recombinant Monoclonal Antibody

Applications

WB,IHC-P,IP,ELISA

Cross-Reactivity

Human

CloneNo number

ARC2580

Background

This gene encodes an integral outer mitochondrial membrane protein that blocks the apoptotic death of some cells such as lymphocytes. Constitutive expression of BCL2, such as in the case of translocation of BCL2 to Ig heavy chain locus, is thought to be the cause of follicular lymphoma. Alternative splicing results in multiple transcript variants.

Recommended Dilutions

WB 1:500 - 1:2000

IHC-P 1:50 - 1:200

IP 0.5µg-4µg antibody for
200µg-400µg extracts of
whole cells

Immunogen Information

Gene ID

596

Swiss Prot

P10415

Immunogen

A synthetic peptide corresponding to a sequence within amino acids 1-100 of human Bcl-2 (P10415).

Synonyms

Bcl-2; PPP1R50

Contact



www.abclonal.com

Product Information

Source

Rabbit

Isotype

IgG

Purification

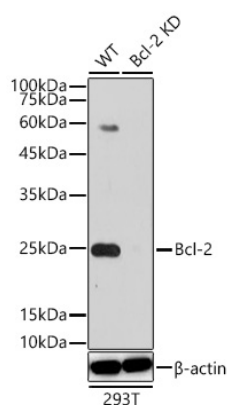
Affinity purification

Storage

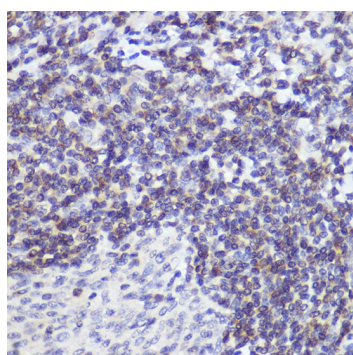
Store at -20°C. Avoid freeze / thaw cycles.

Buffer: PBS with 0.02% sodium azide,0.05% BSA,50% glycerol,pH7.3.

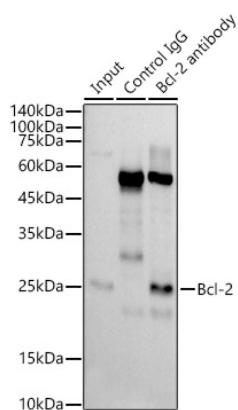
Validation Data



Western blot analysis of lysates from wild type (WT) and Bcl-2 knockdown (KD) 293T cells using [KD Validated] Bcl-2 Rabbit mAb (A21873) at 1:1000 dilution incubated overnight at 4°C. Secondary antibody: HRP-conjugated Goat anti-Rabbit IgG (H+L)(AS014) at 1:10000 dilution. Lysates/proteins: 25 µg per lane. Blocking buffer: 3% nonfat dry milk in TBST. Detection: ECL Basic Kit (RM00020) Exposure time: 30 s.



Immunohistochemistry analysis of Bcl-2 in paraffin-embedded human tonsil using [KD Validated] Bcl-2 Rabbit mAb (A21873) at dilution of 1:100 (40x lens). Perform high pressure antigen retrieval with 10 mM citrate buffer pH 6.0 before commencing with IHC staining protocol.



Immunoprecipitation analysis of 300 µg extracts of Jurkat cells using 3 µg [KD Validated] Bcl-2 Rabbit mAb (A21873). Western blot was performed from the immunoprecipitate using [KD Validated] Bcl-2 Rabbit mAb (A21873) at a dilution of 1:1000.