

PP2A-B55α/PR55α/PPP2R2A Rabbit pAb

Catalog No.: A2185 **2 Publications**

Basic Information

Observed MW

52kDa

Calculated MW

52kDa

Category

Primary antibody

Applications

ELISA, WB, IHC-P

Cross-Reactivity

Human, Mouse, Rat

Background

The product of this gene belongs to the phosphatase 2 regulatory subunit B family. Protein phosphatase 2 is one of the four major Ser/Thr phosphatases, and it is implicated in the negative control of cell growth and division. It consists of a common heteromeric core enzyme, which is composed of a catalytic subunit and a constant regulatory subunit, that associates with a variety of regulatory subunits. The B regulatory subunit might modulate substrate selectivity and catalytic activity. This gene encodes an alpha isoform of the regulatory subunit B55 subfamily. Alternatively spliced transcript variants have been described.

Recommended Dilutions

WB 1:500 - 1:2000**IHC-P** 1:50 - 1:200

Immunogen Information

Gene ID

5520

Swiss Prot

P63151

Immunogen

Recombinant fusion protein containing a sequence corresponding to amino acids 1-447 of human PP2A-B55α/PR55α/PPP2R2A (NP_002708.1).

Synonyms

B55A; PR52A; PR55A; B55ALPHA; PR55alpha; PP2A-B55α/PR55α/PPP2R2A

Contact

 | www.abclonal.com

Product Information

Source

Rabbit

Isotype

IgG

Purification

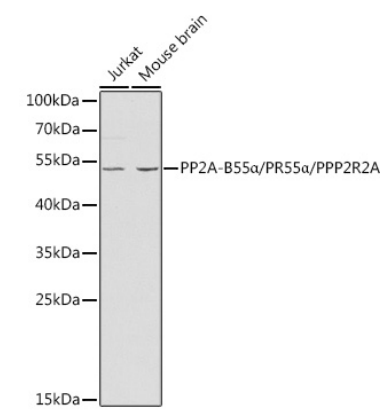
Affinity purification

Storage

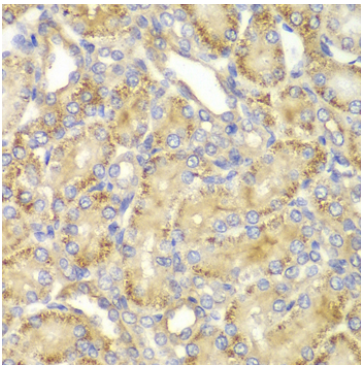
Store at -20°C. Avoid freeze / thaw cycles.

Buffer: PBS with 0.02% sodium azide, 50% glycerol, pH 7.3.

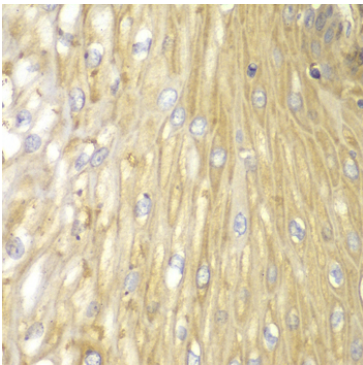
Validation Data



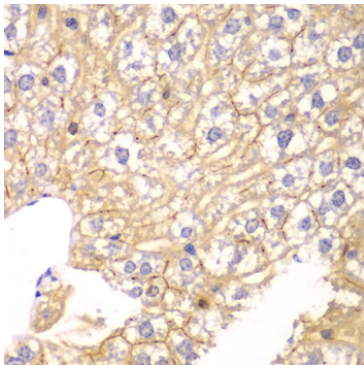
Western blot analysis of extracts of various cell lines, using PP2A-B55α/PR55α/PPP2R2A antibody (A2185) at 1:1000 dilution.
Secondary antibody: HRP Goat Anti-Rabbit IgG (H+L) (AS014) at 1:10000 dilution.
Lysates/proteins: 25µg per lane.
Blocking buffer: 3% nonfat dry milk in TBST.



Immunohistochemistry analysis of paraffin-embedded rat kidney using PP2A-B55α/PR55α/PPP2R2A antibody (A2185) at dilution of 1:100 (40x lens).Perform microwave antigen retrieval with 10 mM PBS buffer pH 7.2 before commencing with IHC staining protocol.



Immunohistochemistry analysis of paraffin-embedded human esophagus using PP2A-B55α/PR55α/PPP2R2A antibody (A2185) at dilution of 1:100 (40x lens).Perform microwave antigen retrieval with 10 mM PBS buffer pH 7.2 before commencing with IHC staining protocol.



Immunohistochemistry analysis of paraffin-embedded mouse liver using PP2A-B55α/PR55α/PPP2R2A antibody (A2185) at dilution of 1:100 (40x lens).Perform microwave antigen retrieval with 10 mM PBS buffer pH 7.2 before commencing with IHC staining protocol.