

A21801

Leader in Biomolecular Solutions for Life Science



KDM1A Rabbit pAb

Catalog No.: A21801

Basic Information

Observed MW

110kDa

Calculated MW

93kDa

Category

Polyclonal Antibody

Applications

WB, IHC-P, IF/ICC, ELISA

Cross-Reactivity

Human, Mouse, Rat

Background

This gene encodes a nuclear protein containing a SWIRM domain, a FAD-binding motif, and an amine oxidase domain. This protein is a component of several histone deacetylase complexes, though it silences genes by functioning as a histone demethylase. Alternative splicing results in multiple transcript variants.

Recommended Dilutions

WB	1:100 - 1:500
IHC-P	1:50 - 1:200
IF/ICC	1:50 - 1:200

Immunogen Information

Gene ID

23028

Swiss Prot

O60341

Immunogen

Recombinant fusion protein containing a sequence corresponding to amino acids 130-380 of human KDM1A (NP_055828.2).

Synonyms

AOF2; CPRF; KDM1; LSD1; BHC110; KDM1A

Contact



www.abclonal.com

Product Information

Source

Rabbit

Isotype

IgG

Purification

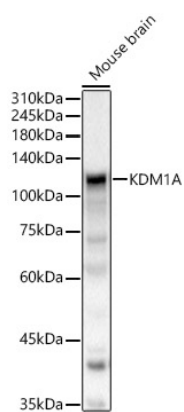
Affinity purification

Storage

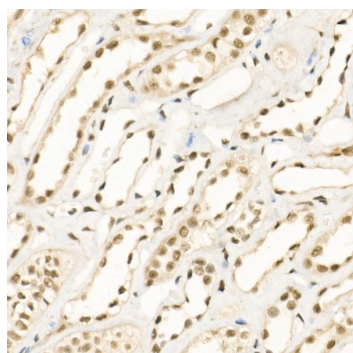
Store at -20°C. Avoid freeze / thaw cycles.

Buffer: PBS with 0.05% proclin300, 50% glycerol, pH7.3.

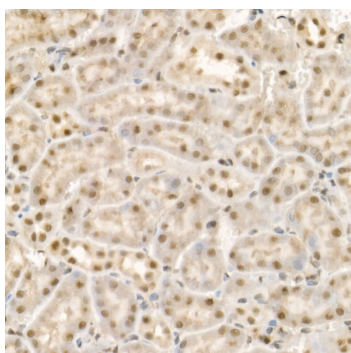
Validation Data



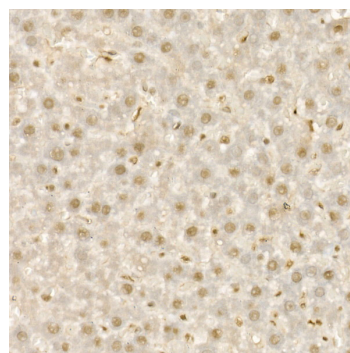
Western blot analysis of Mouse brain, using KDM1A antibody (A21801) at 1:500 dilution.
Secondary antibody: HRP Goat Anti-Rabbit IgG (H+L) (A5014) at 1:10000 dilution.
Lysates/proteins: 25µg per lane.
Blocking buffer: 3% nonfat dry milk in TBST.
Detection: ECL Basic Kit (RM00020).
Exposure time: 20s.



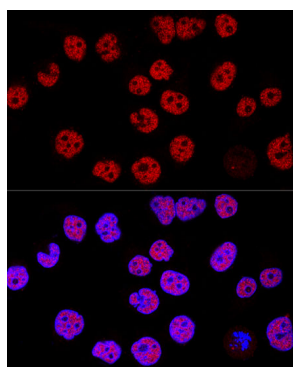
Immunohistochemistry analysis of paraffin-embedded human kidney using KDM1A Rabbit pAb (A21801) at dilution of 1:100 (40x lens). Perform high pressure antigen retrieval with 10 mM citrate buffer pH 6.0 before commencing with IHC staining protocol.



Immunohistochemistry analysis of paraffin-embedded mouse kidney using KDM1A Rabbit pAb (A21801) at dilution of 1:100 (40x lens). Perform high pressure antigen retrieval with 10 mM citrate buffer pH 6.0 before commencing with IHC staining protocol.



Immunohistochemistry analysis of paraffin-embedded rat liver using KDM1A Rabbit pAb (A21801) at dilution of 1:100 (40x lens). Perform high pressure antigen retrieval with 10 mM citrate buffer pH 6.0 before commencing with IHC staining protocol.



Confocal immunofluorescence analysis of HeLa cells using KDM1 Polyclonal Antibody (A21801) at dilution of 1:200. Blue: DAPI for nuclear staining.