

A21781

Leader in Biomolecular Solutions for Life Science



[KD Validated] GPLD1 Rabbit pAb

Catalog No.: A21781

Basic Information

Observed MW

92kDa

Calculated MW

92kDa

Category

Polyclonal Antibody

Applications

WB, ELISA

Cross-Reactivity

Human, Mouse

Background

Many proteins are tethered to the extracellular face of eukaryotic plasma membranes by a glycosylphosphatidylinositol (GPI) anchor. The GPI-anchor is a glycolipid found on many blood cells. The protein encoded by this gene is a GPI degrading enzyme. Glycosylphosphatidylinositol specific phospholipase D1 hydrolyzes the inositol phosphate linkage in proteins anchored by phosphatidylinositol glycans, thereby releasing the attached protein from the plasma membrane.

Recommended Dilutions

WB 1:100 - 1:500

Immunogen Information

Gene ID

2822

Swiss Prot

P80108

Immunogen

Recombinant fusion protein containing a sequence corresponding to amino acids 24-160 of human GPLD1 (NP_001494.2).

Synonyms

PLD; GPIPLD; PIGPLD; GPIPLDM; PIGPLD1; [KD Validated] GPLD1

Contact



www.abclonal.com

Product Information

Source

Rabbit

Isotype

IgG

Purification

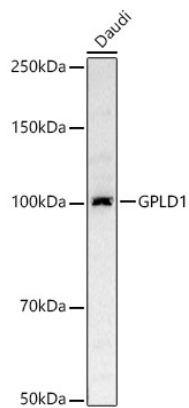
Affinity purification

Storage

Store at -20°C. Avoid freeze / thaw cycles.

Buffer: PBS with 0.05% proclin300, 50% glycerol, pH7.3.

Validation Data



Western blot analysis of lysates from Daudi cells, using [KD Validated] GPLD1 Rabbit pAb (A21781) at 1:500 dilution.
Secondary antibody: HRP Goat Anti-Rabbit IgG (H+L) (AS014) at 1:10000 dilution.
Lysates/proteins: 25µg per lane.
Blocking buffer: 3% nonfat dry milk in TBST.
Detection: ECL Basic Kit (RM00020).
Exposure time: 1s.

Western blot analysis of lysates from wild type(WT) and GPLD1 knockdown (KD) 293T cells, using [KD Validated] GPLD1 Rabbit pAb (A21781) at 1:500 dilution.
Secondary antibody: HRP Goat Anti-Rabbit IgG (H+L) (AS014) at 1:10000 dilution.
Lysates/proteins: 25µg per lane.
Blocking buffer: 3% nonfat dry milk in TBST.
Detection: ECL Basic Kit (RM00020).
Exposure time: 1s.

