

A2171

Leader in Biomolecular Solutions for Life Science



## IL10 Rabbit pAb

Catalog No.: A2171

27 Publications

### Basic Information

#### Observed MW

18kDa

#### Calculated MW

21kDa

#### Category

Polyclonal Antibody

#### Applications

WB, IHC-P, ELISA

#### Cross-Reactivity

Human, Mouse, Rat

### Background

The protein encoded by this gene is a cytokine produced primarily by monocytes and to a lesser extent by lymphocytes. This cytokine has pleiotropic effects in immunoregulation and inflammation. It down-regulates the expression of Th1 cytokines, MHC class II Ags, and costimulatory molecules on macrophages. It also enhances B cell survival, proliferation, and antibody production. This cytokine can block NF-kappa B activity, and is involved in the regulation of the JAK-STAT signaling pathway. Knockout studies in mice suggested the function of this cytokine as an essential immunoregulator in the intestinal tract. Mutations in this gene are associated with an increased susceptibility to HIV-1 infection and rheumatoid arthritis.

### Recommended Dilutions

WB 1:500 - 1:1000

IHC-P 1:50 - 1:100

### Immunogen Information

#### Gene ID

3586

#### Swiss Prot

P22301

#### Immunogen

A synthetic peptide corresponding to a sequence within amino acids 19-178 of human IL10 (NP\_000563.1).

#### Synonyms

CSIF; TGIF; GVHDS; IL-10; IL10A; IL10

### Contact



[www.abclonal.com](http://www.abclonal.com)

### Product Information

#### Source

Rabbit

#### Isotype

IgG

#### Purification

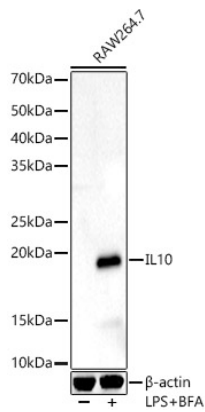
Affinity purification

#### Storage

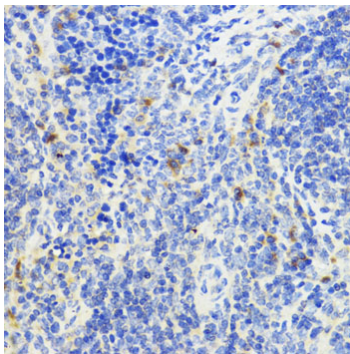
Store at -20°C. Avoid freeze / thaw cycles.

Buffer: PBS with 0.05% proclin300, 50% glycerol, pH7.3.

## Validation Data



Western blot analysis of various lysates, using IL10 Rabbit pAb (A2171) at 1:800 dilution. Raw264.7 cells were treated by LPS for 6 hours and Brefeldin A for 3 hours of stimulation.  
Secondary antibody: HRP Goat Anti-Rabbit IgG (H+L) (AS014) at 1:10000 dilution.  
Lysates/proteins: 25µg per lane.  
Blocking buffer: 3% nonfat dry milk in TBST.  
Detection: ECL Enhanced Kit (RM00021).  
Exposure time: 90s.



Immunohistochemistry analysis of IL10 in paraffin-embedded mouse spleen using IL10 Rabbit pAb (A2171) at dilution of 1:200 (40x lens). Perform microwave antigen retrieval with 10 mM PBS buffer pH 7.2 before commencing with IHC staining protocol.