

A21664

Leader in Biomolecular Solutions for Life Science



CDK2AP1 Rabbit pAb

Catalog No.: A21664

Basic Information

Observed MW

Refer to figures

Calculated MW

12kDa

Category

Polyclonal Antibody

Applications

WB, ELISA

Cross-Reactivity

Human

Background

The protein encoded by this gene is a cyclin-dependent kinase 2 (CDK2) -associated protein which is thought to negatively regulate CDK2 activity by sequestering monomeric CDK2, and targeting CDK2 for proteolysis. This protein was found to also interact with DNA polymerase alpha/primase and mediate the phosphorylation of the large p180 subunit, which suggests a regulatory role in DNA replication during the S-phase of the cell cycle. This protein also forms a core subunit of the nucleosome remodeling and histone deacetylation (NURD) complex that epigenetically regulates embryonic stem cell differentiation. This gene thus plays a role in both cell-cycle and epigenetic regulation. Alternative splicing results in multiple transcript variants encoding distinct isoforms.

Recommended Dilutions

WB 1:500 - 1:2000

Immunogen Information

Gene ID

8099

Swiss Prot

O14519

Immunogen

Recombinant fusion protein containing a sequence corresponding to amino acids 1-115 of human CDK2AP1 (NP_004633.1).

Synonyms

DOC1; ST19; DORC1; doc-1; p12DOC-1; CDK2AP1

Contact



www.abclonal.com

Product Information

Source

Rabbit

Isotype

IgG

Purification

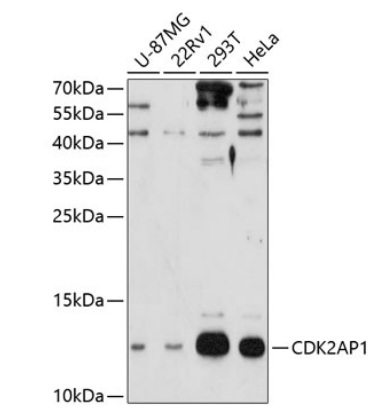
Affinity purification

Storage

Store at -20°C. Avoid freeze / thaw cycles.

Buffer: PBS with 0.01% thimerosal, 50% glycerol, pH 7.3.

Validation Data



Western blot analysis of various lysates using CDK2AP1 Rabbit pAb (A21664) at 1:3000 dilution. Secondary antibody: HRP Goat Anti-Rabbit IgG (H+L) (AS014) at 1:10000 dilution. Lysates/proteins: 25µg per lane. Blocking buffer: 3% nonfat dry milk in TBST. Detection: ECL Enhanced Kit (RM00021). Exposure time: 90s.