

## CASP3 Polyclonal Antibody

<b>Catalog No.</b>	A2156	<b>Category</b>	Polyclonal Antibodies
<b>Applications</b>	WB, IHC, IF	<b>Observed MW</b>	17kDa, 35kDa
<b>Cross-reactivity</b>	Human, Mouse, Rat	<b>Calculated MW</b>	31kDa

### Immunogen Information

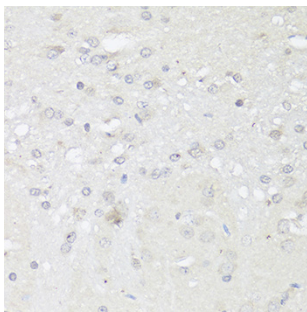
<b>Immunogen</b>	Recombinant fusion protein containing a sequence corresponding to amino acids 55-160 of human CASP3 (NP_004337.2).
<b>Gene ID</b>	836
<b>Swiss prot</b>	P42574
<b>Synonyms</b>	CASP3; CPP32; CPP32B; SCA-1; caspase-3

### Product information

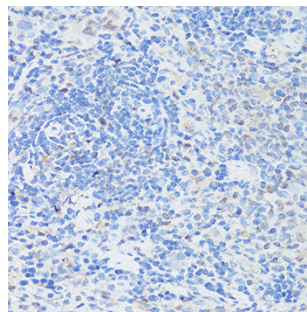
<b>Source</b>	Rabbit
<b>Isotype</b>	IgG
<b>Purification method</b>	Affinity purification
<b>Storage</b>	Store at -20°C. Avoid freeze / thaw cycles. Buffer: PBS with 0.02% sodium azide, 50% glycerol, pH7.3.

### Background

This gene encodes a protein which is a member of the cysteine-aspartic acid protease (caspase) family. Sequential activation of caspases plays a central role in the execution-phase of cell apoptosis. Caspases exist as inactive proenzymes which undergo proteolytic processing at conserved aspartic residues to produce two subunits, large and small, that dimerize to form the active enzyme. This protein cleaves and activates caspases 6, 7 and 9, and the protein itself is processed by caspases 8, 9 and 10. It is the predominant caspase involved in the cleavage of amyloid-beta 4A precursor protein, which is associated with neuronal death in Alzheimer's disease. Alternative splicing of this gene results in two transcript variants that encode the same protein.



Immunohistochemistry - CASP3 Polyclonal Antibody (A2156)



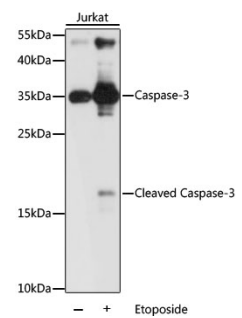
Immunohistochemistry - CASP3 Polyclonal Antibody (A2156)

### Recommended Dilutions

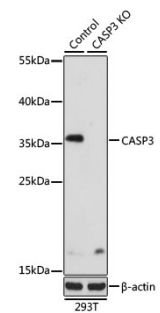
WB 1:500 -  
1:2000

IHC 1:50 -  
1:200

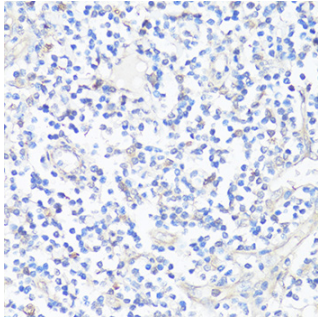
IF 1:50 -  
1:200



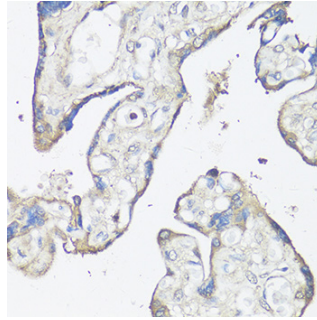
Western blot - CASP3 Polyclonal Antibody (A2156)



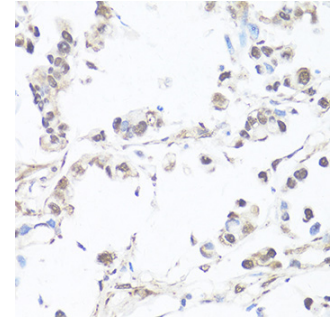
Western blot - CASP3 Polyclonal Antibody (A2156)



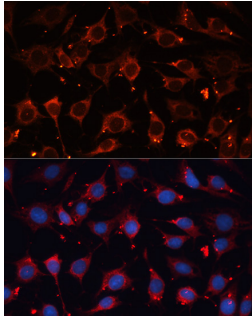
Immunohistochemistry - CASP3 Polyclonal Antibody (A2156)



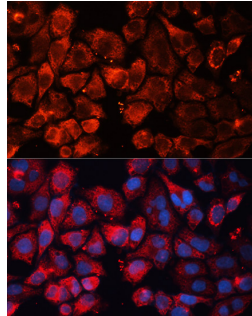
Immunohistochemistry - CASP3 Polyclonal Antibody (A2156)



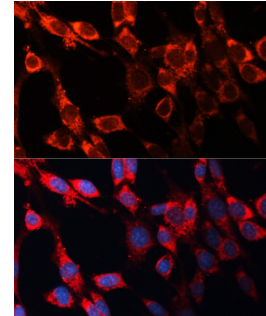
Immunohistochemistry - CASP3 Polyclonal Antibody (A2156)



Immunofluorescence - CASP3 Polyclonal Antibody (A2156)



Immunofluorescence - CASP3 Polyclonal Antibody (A2156)



Immunofluorescence - CASP3 Polyclonal Antibody (A2156)