

A21462

Leader in Biomolecular Solutions for Life Science



## [KO Validated] IFNAR2 Rabbit pAb

Catalog No.: A21462 **KO** Validated

### Basic Information

#### Observed MW

95kDa

#### Calculated MW

27kDa/37kDa/57kDa

#### Category

Polyclonal Antibody

#### Applications

WB, ELISA

#### Cross-Reactivity

Human, Mouse, Rat

### Background

The protein encoded by this gene is a type I membrane protein that forms one of the two chains of a receptor for interferons alpha and beta. Binding and activation of the receptor stimulates Janus protein kinases, which in turn phosphorylate several proteins, including STAT1 and STAT2. The protein belongs to the type II cytokine receptor family. Mutations in this gene are associated with Immunodeficiency 45.

### Recommended Dilutions

WB 1:500 - 1:1000

### Immunogen Information

#### Gene ID

3455

#### Swiss Prot

#### Immunogen

Recombinant fusion protein containing a sequence corresponding to amino acids 101-243 of human IFNAR2 (NP\_997468.1).

#### Synonyms

IFN-R; IMD45; IFNABR; IFNARB; IFN-R-2; IFN-alpha-REC; R2

### Contact



[www.abclonal.com](http://www.abclonal.com)

### Product Information

#### Source

Rabbit

#### Isotype

IgG

#### Purification

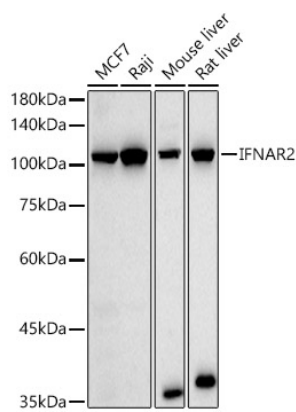
Affinity purification

#### Storage

Store at -20°C. Avoid freeze / thaw cycles.

Buffer: PBS with 0.05% proclin300, 50% glycerol, pH7.3.

Validation Data



Western blot analysis of various lysates, using [KO Validated] IFNAR2 Rabbit pAb (A21462) at 1:1000 dilution.  
Secondary antibody: HRP Goat Anti-Rabbit IgG (H+L) (AS014) at 1:10000 dilution.  
Lysates/proteins: 25µg per lane.  
Blocking buffer: 3% nonfat dry milk in TBST.  
Detection: ECL Basic Kit (RM00020).  
Exposure time: 90s.

Western blot analysis of lysates from wild type(WT) and IFNAR2 Rabbit pAb knockout (KO) HeLa cells, using [KO Validated] IFNAR2 Rabbit pAb (A21462) at 1:1000 dilution.  
Secondary antibody: HRP Goat Anti-Rabbit IgG (H+L) (AS014) at 1:10000 dilution.  
Lysates/proteins: 25µg per lane.  
Blocking buffer: 3% nonfat dry milk in TBST.  
Detection: ECL Basic Kit (RM00020).  
Exposure time: 90s.

